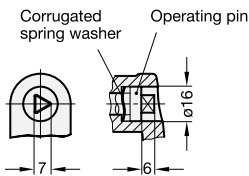
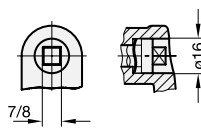


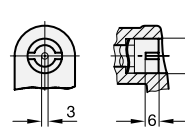
- Type**
- DK** Operation with triangular spindle (DK7)
 - VK7** Operation with square spindle A/F7
 - VK8** Operation with square spindle A/F8
 - VDE** Operation with double bit



Type **DK**



Type **VK7/VK8**



Type **VDE**

Clamping range **A1...A9** (Door + frame thickness)

A 1 (l=28)	A 2 (l=33)	A 3 (l=38)	A 4 (l=43)	A 5 (l=48)	A 6 (l=53)	A 7 (l=58)	A 8 (l=63)	A 9 (l=68)
17 - 25	22 - 30	27 - 35	32 - 40	37 - 45	42 - 50	47 - 55	52 - 60	57 - 65

Specification

- “U“ handle
Zinc die casting plastic coated black, RAL 9005, textured finish silver, RAL 9006, textured finish
- Cam latch
Sheet Steel zinc plated, blue passivated
- Distance piece
Aluminum
- other parts
Steel zinc plated, blue passivated
- **RoHS compliant**



Information

Latches with cabinet „U“ handle GN 119.3 are used when the application requires both a locking mechanism and a handle.

The cabinet „U“ handle with integrated lock is an attractively designed and cost-effective solution.

The locking mechanisms have a draw-in range of 10 mm. The unit is locked by turning clockwise.

see also...

- Latches with cabinet „U“ handles GN 115.7

→ Main catalogue page 866

Accessory

- Key GN 119.2 → Main catalogue page 870

How to order

GN 119.3-DK-A4-SW

- | | |
|---|------------------|
| 1 | Type |
| 2 | Clamping range A |
| 3 | Finish |



Latches with cabinet „U“ handle GN 119.3
 Latches with cabinet „U“ handle GN 115.7 → *Main catalogue Page 866*
 Keys GN 119.2 → *Main catalogue Page 870*

Technical and assembly instructions

By turning the latch clockwise, the stepped door locking bar engages behind the door frame and pulls the door shut.

The large tractive range of 10 mm also allows doors with sealing strips to be locked without any problems. When selecting the clamping range A, the sealing strip may have to be taken into account.

For mounting, the door is fitted with two bore holes as shown in the outline drawing opposite, attached at a distance of 23 mm from the door frame.

The spigot (M22x1,5) has 4 surfaces, allowing the cabinet „U“ handle also to be used with the standard bore holes of door latches GN 119 → *Main catalogue page 848*

The locking enclosure with the preassembled operating bolt is pushed through from the front and fixed in place with the hexagonal nut. The distance sleeve and the door locking bar is then plugged on at the back and fixed in place with the hexagonal screw.

