



**MATERIAL**

Glass-fibre reinforced polyamide based (PA) technopolymer coated with "soft-touch" thermoplastic elastomer (TPE), hardness 90 Shore A, black colour, matte finish. The coating material is certified in compliance with FDA (U.S. Food and Drug Administration).

**STANDARD EXECUTION**

Brass boss, plain blind hole.  
Fitting to the shaft by means of a black-oxide steel socket set screw according to ISO 4029 (grub screws with hexagon socket and cup end).

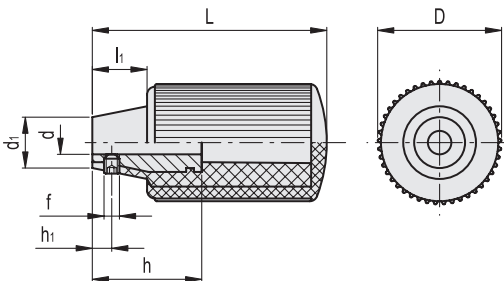
**FEATURES AND APPLICATIONS**

The coating, with "soft-touch" elastomer, improves the grip even in the presence of oils, greases and sweat from the hand. For this reason it is suitable for fitness machines, tools and machines for gardening and goods transport, high-precision instruments and disability aids.

- 1
- 2
- 3
- 4
- 5
- 6
- 7
- 8
- 9
- 10
- 11
- 12
- 13
- 14
- 15
- RH
- 



ELESA Original design



Code	Description	D	L	dH7	d1	h	h1	l1	f	△
120402	I.168/60 B-6-SOFT	30	60	6	13	28	5	14	M4	59

Fixed & revolving handles