

- 1
- 2
- 3
- 4
- 5
- 6
- 7
- 8
- 9
- 10
- 11
- 12
- 13
- 14
- 15
- RH

## MATERIAL

Glass-fibre reinforced polyamide based (PA) technopolymer, black colour, matte finish.

## STANDARD EXECUTIONS

- **VCRT-N**: square pass-through hole with brass reinforcement.
- **VCRT-FP**: brass boss, threaded pass-through hole.

## ACCESSORIES ON REQUEST

Coloured centre caps (see table below). Coloured centre caps allow an easier identification of the different functions of the knobs.  
Coloured centre caps are available as accessories sold separately.

## SPECIAL EXECUTION ON REQUEST

Square pass-through hole without brass reinforcement.



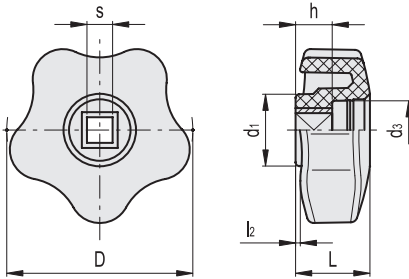
ELESA Original design

	C9	C2	C3	C4	C5	C6	
Cap for	Code						Description
VCRT.40	6910	6913	6914	6915	6916	6911	CA.VCT.40-*
VCRT.50	6920	6923	6924	6925	6926	6921	CA.VCT.50-*
VCRT.63-74-95	6930	6933	6934	6935	6936	6931	CA.VCT.63-74-95-*

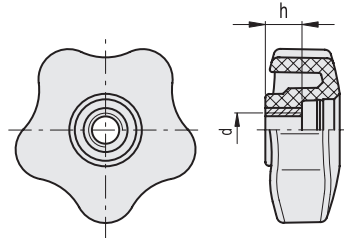
\* Complete with the index of the colour (C9, ..., C6)

	<b>C9</b>		<b>C2</b>		<b>C3</b>		<b>C4</b>		<b>C5</b>		<b>C6</b>
	RAL9005		RAL2004		RAL7035		RAL1021		RAL5024		RAL3000

VCRT-N



VCRT-FP



## VCRT-N

Code	Description	D	sH9	L	d1	d3	l2	h	Δ <sub>Δ</sub>
169001	VCRT.40 N-6x6	40	6	17	17	12.5	1	10	10
169101	VCRT.50 N-6x6	50	6	20	19	15.5	1.2	10	23
169111	VCRT.50 N-7x7	50	7	20	19	15.5	1.2	10	22
169201	VCRT.63 N-6x6	63	6	21.5	22.5	19.5	1.3	10	36
169211	VCRT.63 N-7x7	63	7	21.5	22.5	19.5	1.3	10	35
169221	VCRT.63 N-8x8	63	8	21.5	22.5	19.5	1.3	10	34
169311	VCRT.74 N-7x7	74	7	24.5	26.5	19.5	2	14	51
169321	VCRT.74 N-8x8	74	8	24.5	26.5	19.5	2	14	50
169331	VCRT.74 N-9x9	74	9	24.5	26.5	19.5	2	14	49
169341	VCRT.74 N-10x10	74	10	24.5	26.5	19.5	2	14	48
169421	VCRT.95 N-8x8	95	8	29.5	32	18	4.5	14	64
169441	VCRT.95 N-10x10	95	10	29.5	32	18	4.5	14	63

## VCRT-FP

Code	Description	D	d6H	L	d1	d3	l2	h	Δ <sub>Δ</sub>
168998	VCRT.40 FP-M8	40	M8	17	17	12.5	1	10	10
168999	VCRT.40 FP-M10	40	M10	17	17	12.5	1	10	9
169098	VCRT.50 FP-M8	50	M8	20	19	15.5	1.2	10	23
169197	VCRT.63 FP-M10	63	M10	21.5	22.5	19.5	1.3	15	35
169198	VCRT.63 FP-M12	63	M12	21.5	22.5	19.5	1.3	15	34
169307	VCRT.74 FP-M10	74	M10	24.5	26.5	19.5	2	15	48
169308	VCRT.74 FP-M12	74	M12	24.5	26.5	19.5	2	15	47
169418	VCRT.95 FP-M16	95	M16	29.5	32	18	4.5	15	60