



MATERIAL

Glass-fibre reinforced polyamide based (PA) technopolymer, white colour similar to RAL 9002, matte finish.

STANDARD EXECUTION

AISI 303 stainless steel boss, threaded blind hole.

FEATURES AND APPLICATIONS

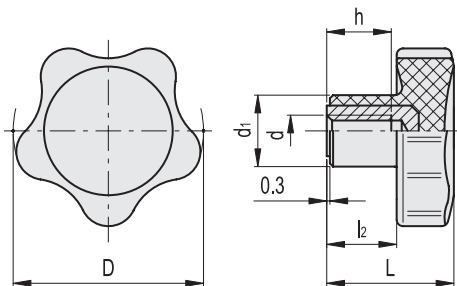
The exclusive five-lobe shape (ELESA original design) offers the operator's fingers a proper grip and prevents unhealthy residues from depositing thanks to its solid shape without cavities.

This knob is particularly suitable for applications on machines and equipment whose parts must be frequently cleaned by using water jets or steam.

The metal insert in AISI 303 stainless steel can be used in sectors where corrosion resistant materials are required.



ELESA Original design



Code	Description	D	d6H	L	d1	l2	h	⚖️
151702	VC.692/32-SST-M6-CLEAN	32	M6	22.5	14	12.5	10	15
151712	VC.692/40-SST-M8-CLEAN	40	M8	26	15	14	13	24
151722	VC.692/50-SST-M10-CLEAN	50	M10	31	18	17	17	42
151732	VC.692/60-SST-M12-CLEAN	60	M12	36.5	21	21	20	54