



**MATERIAL**

High-resilience polypropylene based (PP) technopolymer, coated with "soft-touch" thermoplastic elastomer (TPE) chemically bonded, hardness 70 Shore A, black colour, matte finish.

The coating material is certified in compliance with FDA (U.S. Food and Drug Administration).

**MAGNIFYING LENS**

Transparent polyamide based (PA-T) technopolymer. Resistant to solvents, oils, greases, petrol and other chemical agents (avoid contact with alcohol). Press-fit assembly. It improves the visibility of the labels.

**STANDARD EXECUTION**

Plain blind hole.

The elastic coupling, by press-fit assembly on h9 tolerance drawn stock bars, is not affected by vibrations and prevents the handle from slipping off (see Technical data on page A-13).

**ACCESSORIES ON REQUEST**

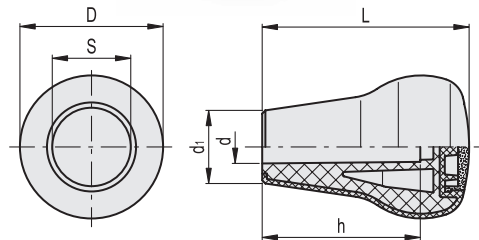
Self-adhesive labels MA. (see page 380) with standard marks and symbols to be ordered separately.

**ASSEMBLY INSTRUCTIONS**

1. See IEL.N SOFT
2. Stick the self-adhesive label (printed on the adhesive side) to the inner surface of the magnifying lens by pressing from the centre to the external side to avoid air bubbles. Assemble the magnifying lens to the handle face recess by gently tapping with a wooden or plastic mallet, until firmly in place. The label is therefore protected by the watertight magnifying lens.



ELESA Original design



Code	Description	D	L	d	S	d1	h	⚖️
26672	IEL.65 N-10-H SOFT	45	65	10	25	23	50	56
26671	IEL.65 N-12-H SOFT	45	65	12	25	23	50	55