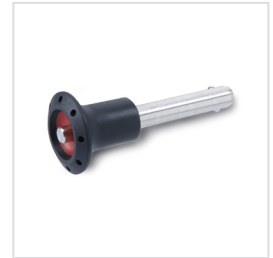
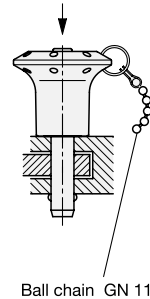


Example for application



ROSTFREI
Inox
Stainless
Steel

1 2

d ₁ -0,04 -0,08	I ₁ +0,6									d ₂	d ₃	d ₄	I ₂ ±0,2	I ₃ -0,2	Locating bore H11	Load in kN ≈ Double sided shearing resistance acc. DIN 50141 (Breaking strength)	
	5	10	15	20	25	30	-	-	-							-	AISI 303
5	10	15	20	25	30	-	-	-	-	5,5	30	16	6	26	5	14	24
6	10	15	20	25	30	35	40	45	50	7	30	16	7,1	26	6	21	35
8	20	25	30	35	40	45	50	-	-	9,5	35	19	8,2	32,5	8	38	63
10	20	25	30	35	40	45	50	60	-	12	35	19	9,6	32,5	10	60	100
12	25	30	35	40	45	50	60	70	80	14,5	42	25	10,6	39	12	87	144
16	30	35	40	45	50	60	70	80	-	19	42	25	14	39	16	155	257

Specification

- GN 113.5**
Pin Stainless Steel AISI 303
- GN 113.6**
Pin Stainless Steel AISI 630 precipitation-hardened
- Knob
Plastic (Polyamide PA)
- black-grey / red
- temperature resistant up to 80 °C
- Balls
Stainless Steel AISI 420C
- Spring
Stainless Steel
German Material No. 1.4565
- Stainless Steel characteristics → Page 1144
- RoHS compliant

Accessory

- Ball chains GN 111 / GN 111.5 → Page 477
- Retaining cables GN 111.2 → Page 478
- Spiral retaining cables GN 111.4 → Page 479

Information

Stainless Steel-Ball lock pins GN 113.5 / GN 113.6 are used for quick fixing, connecting and locking of various parts and workpieces. A typical application is locating pins which have often to be removed and installed again. By pressing the spring loaded push button both balls are unlocked and by releasing it, the balls are locked again.

Ball lock pins GN 113.6 have an extreme load capacity, the pin is made of heavy duty, hardened and highly abrasion-resistant stainless steel.

The load values given in the above table at shear stress are theoretically obtained and indicative only. They are non-binding recommended values and rule out any liability. They constitute no general warranty of quality and condition. The user must determine from case to case whether a product is suitable for the intended use.

see also...

- Range of locking pins → Page 466

Ball lock pins, AISI 303

GN 113.5-8-25

- 1 d₁
- 2 I₁

Ball lock pins, AISI 630

GN 113.6-16-50

- 1 d₁
- 2 I₁

2.1
2.2
2.3
2.4
2.5
2.6
2.7
2.8
2.9