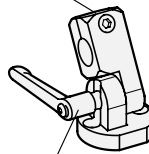


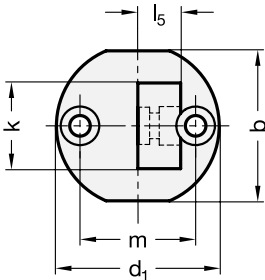
Clamping kit
GN 511.1, Type K



Swivel clamp mounting
GN 482



Clamping kit
GN 511.1, Type S



k	b	d ₁	d ₂ for screw	d ₃ Swivel bore	d ₄	l ₁	l ₂	l ₃	l ₄	l ₅	m	Clamping kit for d ₃ Type K	Clamping kit for d ₃ Type S
16	29	31,5	M 4	4,5	7,5	25	17	7	3	8	22		
20	35	38	M 5	5,5	9	30	20	8	2,5	10	27	GN 511.1-M5-20-K	GN 511.1-M5-20-S
25	41	45	M 6	6,5	10,5	37	24,5	10	4	12,5	32	GN 511.1-M6-25-K	GN 511.1-M6-25-S
30	44	50	M 6	6,5	10,5	44,5	29,5	12,5	6,5	15	36	GN 511.1-M6-30-K	GN 511.1-M6-30-S

Specification

- Aluminium
 - matt, tumbled finish **MT**
 - anodized black **ELS**
- Stainless Steel characteristics → Page 1144
- RoHS compliant

Accessory

- Clamping kits GN 511.1



Information

Swivel clamp connector bases GN 485 can be combined with swivel clamp mountings GN 482, T-swivel clamp mountings GN 483 and attachment clamp mountings GN 484 with the same k dimensions into swivel clamp mounting joints. Clamping kits GN 511.1 with screw (type S) and adjustable hand lever (type K) are available to connect the joints and bases (code no. for ordering is shown in the dimensional table).

The center to center mounting hole distance m of the swivel clamp connector bases GN 485 matches the base plate clamp mountings GN 473, clamp mountings GN 477, flanged bolts GN 480 as well as retaining magnets GN 51.6.

see also...

- Flanged bolts GN 480 → Page 1084
- Stainless Steel-Retaining tubes / Retaining rods GN 480.1 → Page 1085
- Clamp mountings GN 477 → Page 1077

How to order

GN 485-16-MT

1	k
2	Finish