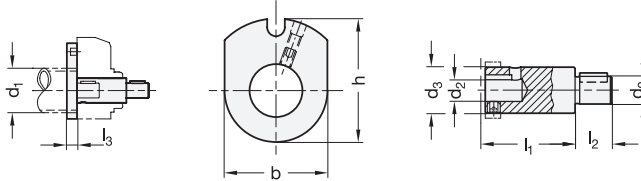
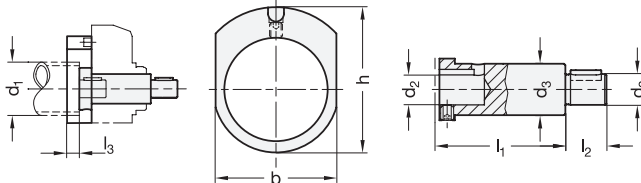


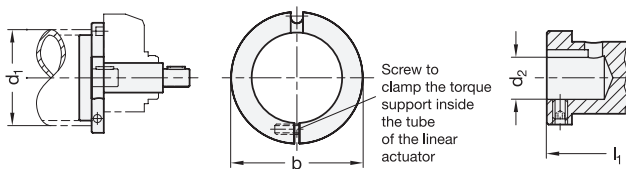
Identification no. 1 (Size $d_1 = 18 \dots 50$)



Identification no. 2 (Size $d_1 = 30 \dots 50$)



Identification no. 1 and 2 (Size $d_1 = 60$)



3 Identification no.

- 1 for mechanical position indicators GN 953 / GN 954 / GN 955
- 2 for electronic position indicators GN 9053 / GN 9054

1

2

d_1 Ø Linear-actuator	d_2 f7	b	d_3	h	l ₁		l ₂	l ₃	for position indicators
					ld. no. 1	ld. no. 2			
18	6	24	10	33	23	-	16	10	GN 955
30	8	35	14	42	30	36	15	10	GN 954 / GN 9054
40	12	47	20	56,5	39	43	16	10	GN 953 / GN 9053
50	12	58	20	61	39	43	17	10	GN 953 / GN 9053
60	14	64	20	-	39	43	18	-	GN 953 / GN 9053

Specification

- Adaptor shaft
Steel
blackened
- Torque support
Aluminium
black anodized
- ISO-Fundamental Tolerances → Page 1032
- RoHS compliant

Accessory

- Position indicators and handwheels have to be ordered separately.

On request

- Linear actuators with analogue position indicator GN 000.8

Information

With the installation kit GN 295 the linear actuators can be fitted with a digital position indicator.

An installation kit comprises an adaptor shaft and a torque support.

A retrofit is possible. The handwheel is removed, the kit is mounted and the handwheel is refitted. For linear actuators Ø 60 the plastic cover on the attachment side must be removed before assembly.

As a rule a counter is chosen which is matched to the pitch of the spindle with trapezoidal thread so the indicator after one complete revolution accords to the pitch of the spindle.

see also...

- Position indicators GN 953 / GN 954 / GN 955 → Page XYZ / XYZ / XYZ
- Position indicators GN 9053 / GN 9054 → Page XYZ / XYZ
- Linear actuators → Page 1036 et sq.
- Drive / Transfer units GN 391 → Page 1068

How to order

GN 295-30-8-1

1	d_1
2	d_2
3	Identification no.