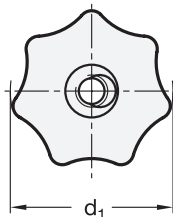
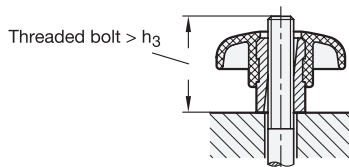
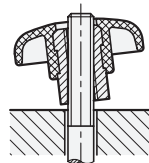
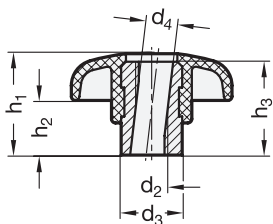


Range extended!



ROSTFREI
Inox
Stainless
Steel



1

2

d ₁	d ₂	d ₃	d ₄	h ₁	h ₂ ≈	h ₃ min.
40	M 8	16	8,4	26	13	24
50	M 10	20	10,5	34	17	30
63	M 12	26	13	42	21	37

Specification

- Plastic
Technopolymer (Polyamide PA)
- shock-resistant
- black, matt finish
- Bushing
- Steel
zinc plated, blue passivated
- Stainless Steel
AISI 303
- Plastic characteristics → Page 1141
- Stainless Steel characteristics → Page 1144
- RoHS compliant

3

Information

Quick release star knobs GN 6336.3 are used in such applications where the knob has to be completely removed after the releasing operation and refitted rapidly for re-clamping.

The knob is tilted over the threaded spindle. When in position, the knob is brought into a straight position for meshing of the two threads on nut and spindle. The knob will then have to be turned only by fraction of a rotation to achieve clamping.

Functional safety exists only if the clamping surface lies at a right angle to the threaded bolt.

see also...

- Quick release knurled nuts GN 6303.1 → Page 324

How to order

GN 6336.3-50-M10

1 d₁

2 d₂

How to order

GN 6336.3-40-M8-NI

1 d₁

2 d₂

3 Material (bushing)