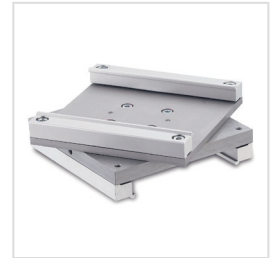
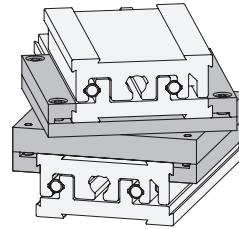


Mounting example



1 2

b Size of the slide	l ₁	d Cap screws DIN 912	h ₁	h ₂	h ₃	l ₂	s
30	41	M 2,5	18,4	10	4,2	35,4	6
50	67	M 3	28	14	7	58	9
80	105	M 4	39	14	12,5	92	9
120	145	M 5	47,6	20	13,8	131,8	12

Specification

- Aluminium anodized, natural colour
- Socket head cap screws DIN 912 Stainless Steel
- RoHS compliant

Information

GN 900.5 rotary plates allow rotation of one of the adjustable slide units at an offset angle to the other. This offers an additional possible axis configuration.

The alternative adaptor consists of two plates connected together in the center so they may be rotated. The lower plate is clamped to the lower sliding part, while the upper one is clamped to the stationary base of the upper sliding unit.

All parts required are included.

see also...

- Adjustable slide units GN 900 → Page 366

How to order

GN 900.5-80-105

1 b

2 l₁

1.1
1.2
1.3
1.4
1.5
1.6
1.7
1.8
1.9