

4 Type

A 2x2 bores for countersunk head screw

2 **3**

l_1	l_2	d	h_1	h_2	h_3	h_4	l_3	m_1	m_2	A/F	max. recommended tightening torque of the set screw in Nm	Friction torque in Nm \approx
40	40	5,3	13,5	5	7	14	13	25	25	2,5	0,5	2
50	50	6,5	15,5	6	8	16	16,5	30	30	3	0,75	4
60	60	8,3	18,5	7,5	9,5	19	20	36	36	4	1,5	6,5

Specification

1 **5**

- Zinc die casting **ZD**
- plastic coated **SW**
- black, RAL 9005, textured finish **SR**
- silver, RAL 9006, textured finish
- Friction cone Plastic (Polyacetal POM) temperature resistant up to 80 °C
- Set screw / Hexagon nut Steel zinc plated, blue passivated
- Plastic characteristics → Page 331
- RoHS compliant

Information

The setscrew in the hinges GN 437 allows the mobility of the hinge to be changed. This also generates a constant braking torque adjustable across the whole of the rotating range. The rotation of doors and flaps is so inhibited, also preventing the inadvertent movement.

The friction torque is accomplished by interlocking two slim friction cones. The large friction surface and the hard-wearing plastic of the friction cones guarantee a long service life with virtually constant stiffness.

Owing to the structure and the prestress of the friction cones, the hinge has virtually no radial play and no play at all in axial direction.

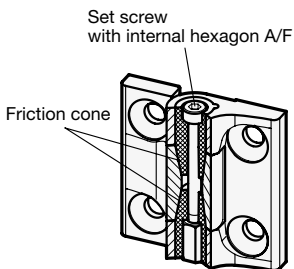
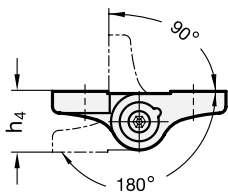
How to order

1	Material
2	l_1
3	l_2
4	Type
5	Finish

GN 437-ZD-60-60-A-SR



Swivelling range



Load rating

