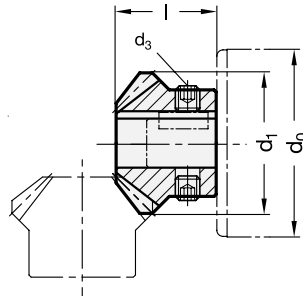
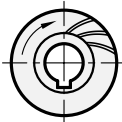
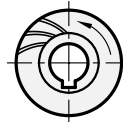


Type R



Type L



Range extended!



3 Type

- R** Bevel gear wheel, right-hand pitch
- L** Bevel gear wheel, left-hand pitch
- W** Set of bevel gears
2 bevel gears,
1 x right-hand pitch,
1 x left-hand pitch
- T** Set of bevel gears
3 bevel gears,
1 x right-hand pitch,
2 x left-hand pitch

1

2

d_0 Ø Linear actuator / Transfer unit	d_1	d_2 H7 Bore with keyway K	b	d_3	Length l
18	14,5	K 6	2	M 4	11
30	25	K 8	2	M 6	19
40 / 50	33	K 12	4	M 6	23,5

Specification

- Steel hardened
- Teeth milled
- RoHS compliant

Information

Bevel gear wheels GN 297 are used for angular / T-gears in connection with linear actuators / transfer units and housings GN 298.

The spiral bevel facilitates both setting the desired clearance and locating the correct position of the bevel gears. Also, gears set up this way run with extremely low noise levels.

Two bevel gears are needed for an angular gear, three bevel gears are needed for a T-gear. These are available as set in Type W and Type T resp.

Please note that only bevel gears with different pitches can be paired. The transmission ratio is always 1:1, because the bevel gears always have the same number of teeth.

see also...

- Linear actuators GN 291 → Main Catalogue Page 1036
- Linear actuators GN 292 → Main Catalogue Page 1038
- Linear actuators GN 293 → Main Catalogue Page 1039
- Housings GN 298 (for angular / T-gears) → Main Catalogue Page 1070
- Assembly and application examples → Main Catalogue Page 1072

How to order

GN 297-33-K12-T

- | | |
|---|-------|
| 1 | d_1 |
| 2 | d_2 |
| 3 | Type |