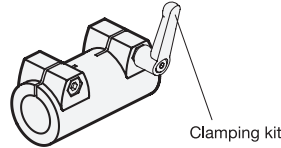
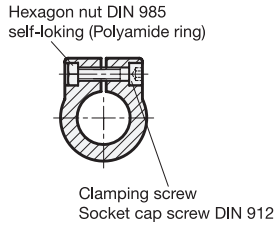
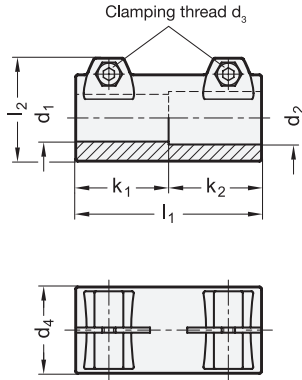
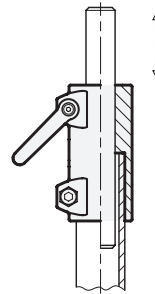


GN 242 Tube connector joints

Aluminum



Application example

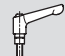


3 Identification No.

2 with 2 Stainless Steel-Clamping screws DIN 912

1

2

d ₁ Bore B		d ₂ Bore B			d ₃ Clamping thread	d ₄	k ₁ Clamping length	k ₂ Clamping length	l ₁	l ₂	Clamping kit for d ₃ 
B 20	B 20	B 25	B 30	-	M 8	40	45	45	90	52	GN 911-M 8-32
B 25	B 25	B 30	-	-	M 8	40	45	45	90	52	GN 911-M 8-32
B 30	B 30	-	-	-	M 8	40	45	45	90	52	GN 911-M 8-32
B 40	B 40	B 45	B 48	B 50	M 10	65	70	70	140	77,5	GN 911-M10-55
B 42	B 42	B 48	B 50	-	M 10	65	70	70	140	77,5	GN 911-M10-55
B 45	B 45	B 50	-	-	M 10	65	70	70	140	77,5	GN 911-M10-55
B 48	B 48	-	-	-	M 10	65	70	70	140	77,5	GN 911-M10-55
B 50	B 50	-	-	-	M 10	65	70	70	140	77,5	GN 911-M10-55

Specification

- Aluminum
 - plastic coated black, RAL 9005, textured finish ● **SW**
 - blank ○ **BL**
 - matt shot-blasted
- Clamping bores mechanically machined
- Socket cap screws DIN 912
Stainless Steel AISI 304
- Hexagon nuts DIN 985
Stainless Steel AISI 304
- Stainless Steel characteristics → Page 1144
- RoHS compliant

Accessory

- Clamping kits GN 911 → Page 1031

On request

- d₁ / d₂ with different bores

4

Information

The clamping bores of GN 242 tube connector joints are mechanically machined and designed for construction tubes GN 990 or DIN 2391, DIN 2395 and DIN 2462 respectively.

The standard version of the clamping screws are socket cap screws with hexagonal socket DIN 912. They can be replaced by clamping kits GN 911 (article code see table of dimensions).

see also...

- Construction tubes GN 990 → Page 1027

How to order

1	d ₁
2	d ₂
3	Identification No.
4	Finish

GN 242-B50-B50-2-SW