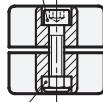
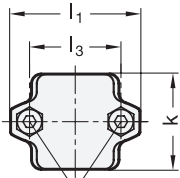


Clamping screw
Socket cap screw DIN 912

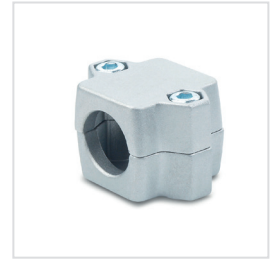
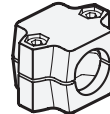
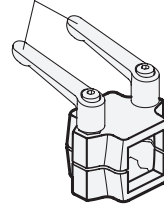


Hexagon nut DIN 985
self-locking (Polyamide ring)




Clamping thread d_2

Clamping kit



3 Identification No.

2 with 2 Stainless Steel-clamping screws DIN 912

1 d_1 Bore B	1 s Square V	2 k Clamping length	d_2 Clamping thread	l_1	l_2	l_3	Clamping kits for d_2 
B 20	V 20	50	M 8	68	46	48	GN 911-M 8-40
B 25	V 25	50	M 8	68	46	48	GN 911-M 8-40
B 30	V 30	50	M 8	68	46	48	GN 911-M 8-40
B 30	V 30	60	M 8	79	59	58	GN 911-M 8-55
B 32	-	60	M 8	79	59	58	GN 911-M 8-55
B 35	V 35	60	M 8	79	59	58	GN 911-M 8-55
B 40	V 40	60	M 8	79	59	58	GN 911-M 8-55
B 40	V 40	76	M 10	98	70	73	GN 911-M10-63
B 42	-	76	M 10	98	70	73	GN 911-M10-63
B 45	V 45	76	M 10	98	70	73	GN 911-M10-63
B 48	-	76	M 10	98	70	73	GN 911-M10-63

Specification

- Aluminium
 - plastic coated
black, RAL 9005, textured finish ● **SW**
 - blank ○ **BL**
 - matt shot-blasted
- Clamping bores not machined
- Socket cap screws DIN 912
Stainless Steel AISI 304
- Hexagon nuts DIN 985
Stainless Steel AISI 304
- Stainless Steel characteristics → Page 1144
- RoHS compliant

Accessory

- Clamping kits GN 911 → Page 1031



Information

The clamping bores of the tube connector joints GN 241 are not machined and specially designed for construction tubes GN 990 or DIN 2391, DIN 2395 and DIN 2462 respectively.

The standard clamping screws are socket cap screws DIN 912. They can be replaced by clamping kits GN 911 (article code see table of dimensions).

see also...

- Construction tubes GN 990 → Page 1027

How to order	1 s (d_1)
1	2 k
2	3 Identification No.
3	4 Finish
4	

GN 241-V45-76-2-SW