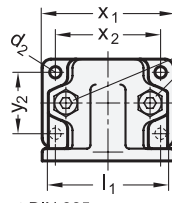
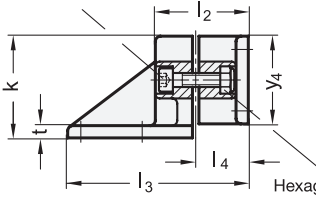
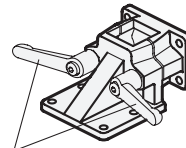


Clamping screw
Socket cap screw DIN 912

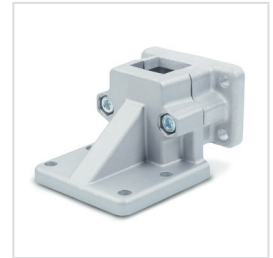


Hexagon nut DIN 985
self-locking (Polyamide ring)

Clamping thread d_3

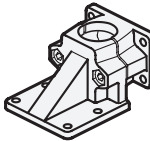
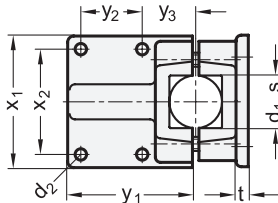


Clamping kit



2 Identification No.

2 with 2 Stainless Steel-clamping screws DIN 912



1 **1**

d_1 Bore B	s Square V	d_2	d_3 Clamping thread	k Clamping length	l_1	l_2	l_3	l_4	t	x_1	x_2	y_1	y_2	y_3	y_4	Clamping kit for d_3
B 20	V 20	7	M 8	58	69	53	103	30	7	75	60	72	35	30	50	GN 911-M 8-45
B 25	V 25	7	M 8	58	69	53	103	30	7	75	60	72	35	30	50	GN 911-M 8-45
B 30	V 30	7	M 8	58	69	53	103	30	7	75	60	72	35	30	50	GN 911-M 8-45
B 40	V 40	11	M 10	91	98	82	156	47	14	115	90	108	50	45	76	GN 911-M10-70
B 42	-	11	M 10	91	98	82	156	47	14	115	90	108	50	45	76	GN 911-M10-70
B 45	V 45	11	M 10	91	98	82	156	47	14	115	90	108	50	45	76	GN 911-M10-70
B 48	-	11	M 10	91	98	82	156	47	14	115	90	108	50	45	76	GN 911-M10-70
B 50	V 50	11	M 10	91	98	82	156	47	14	115	90	108	50	45	76	GN 911-M10-70

Specification

- Aluminium
 - plastic coated black, RAL 9005, textured finish **● SW**
 - blank **○ BL**
 - matt shot-blasted
- Clamping bores not machined
- Socket cap screws DIN 912
Stainless Steel AISI 304
- Hexagon nuts DIN 985
Stainless Steel AISI 304
- Stainless Steel characteristics → Page 1144
- RoHS compliant

Accessory

- Clamping kits GN 911 → Page 1031

3

Information

The clamping bores of the flanged base plate connector clamps GN 171 are not machined and specially designed for construction tubes GN 990 or DIN 2391, DIN 2395 and DIN 2462 respectively.

The square versions are also suitable for **profile systems**.

The standard clamping screws are socket cap screws DIN 912. They can be replaced by clamping kits GN 911 (article code see table of dimensions).

see also...

- Construction tubes GN 990 → Page 1027

How to order

GN 171-B45-2-BL

1	d_1 (s)
2	Identification No.
3	Finish