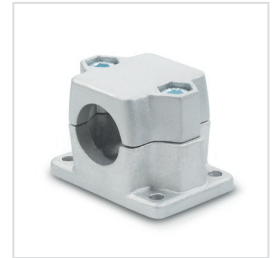
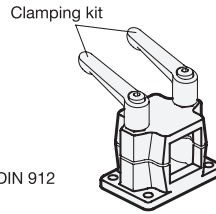
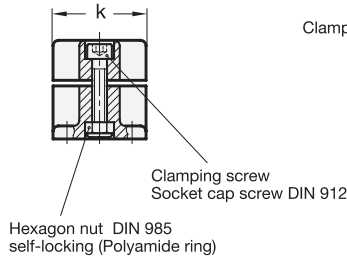
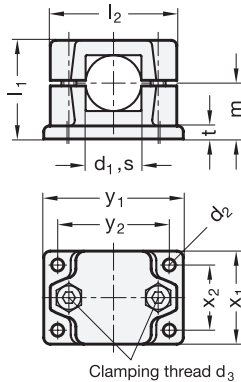
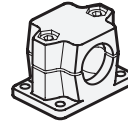


GN 147 Flanged connector clamps

Aluminum, split assembly, with 4 mounting holes



2 Identification No.
2 with 2 Stainless Steel-Clamping screws DIN 912



d₁ Bore B	s Square V	d₂	d₃ Clamping thread	k Clamping length	l₁	l₂	m	t	x₁	x₂	y₁	y₂	Clamping kit for d ₃
B 20	V 20	6,5	M 8	50	53	68	30	7	50	35	75	60	GN 911-M 8-45
B 25	V 25	6,5	M 8	50	53	68	30	7	50	35	75	60	GN 911-M 8-45
B 30	V 30	6,5	M 8	50	53	68	30	7	50	35	75	60	GN 911-M 8-45
B 40	V 40	11	M 10	76	81,5	98	46,5	14	76	50	115	90	GN 911-M10-70
B 42	-	11	M 10	76	81,5	98	46,5	14	76	50	115	90	GN 911-M10-70
B 45	V 45	11	M 10	76	81,5	98	46,5	14	76	50	115	90	GN 911-M10-70
B 48	-	11	M 10	76	81,5	98	46,5	14	76	50	115	90	GN 911-M10-70
B 50	V 50	11	M 10	76	81,5	98	46,5	14	76	50	115	90	GN 911-M10-70

Specification

- Aluminum
 - plastic coated black, RAL 9005, textured finish **● SW**
 - blank **○ BL**
 - matt shot-blasted
- Clamping bores not machined
- Socket cap screws DIN 912
Stainless Steel AISI 304
- Hexagon nuts DIN 985
Stainless Steel AISI 304
- Stainless Steel characteristics → Page 1144
- RoHS compliant

Accessory

- Clamping kits GN 911 → Page 1031

Information

The clamping bores of GN 147 flanged connector clamps are not machined and specially designed for construction tubes GN 990 or DIN 2391, DIN 2395 and DIN 2462 respectively.

The square designs are also suitable for use in **profile systems**.

The standard version of the clamping screws are socket cap screws with hexagonal socket DIN 912. They can be replaced by clamping kits GN 911 (article code see table of dimensions).

see also...

- Construction tubes GN 990 → Page 1027
- Linear actuator connectors GN 147.1 → Page 1058

How to order

GN 147-B25-2-SW

- | | |
|---|--------------------|
| 1 | d ₁ (s) |
| 2 | Identification No. |
| 3 | Finish |