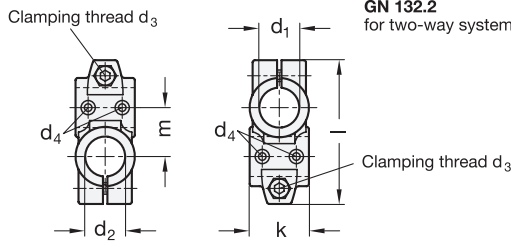
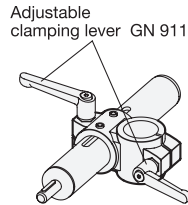


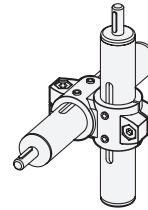
GN 132.1
for single system



GN 132.2
for two-way system



3 Identification No.
2 with 2 Stainless Steel-Clamping screws DIN 912



1

2

d₁ Bore B without slide bushing		d₂ Bore B with slide bushing		d₃ Clamping thread	d₄ Mounting screw on the follower	k Clamping length	Length l	m	Clamping kit for d₃
Bore G	with slide bushing	Bore B	with slide bushing						
B 30	G 30	B 30	G 30	M 8	M 4	40	97	33	GN 911-M 8-32
B 40	G 40	B 40	G 40	M 10	M 5	56	125	45	GN 911-M10-40
B 50	G 50	B 50	G 50	M 10	M 6	65	143	53	GN 911-M10-55
B 60	G 60	B 60	G 60	M 10	M 8	80	169	65	GN 911-M10-55

Specification

4

- Aluminium plastic coated black, RAL 9005, textured finish **● SW**
- Clamping bores mechanically machined
- Slide bushing Polyamide
- Socket cap screws DIN 912 Stainless Steel AISI 304
- Hexagon nuts DIN 985 Stainless Steel AISI 304
- Stainless Steel characteristics* → Page 1144
- RoHS compliant

Accessory

- Clamping kits GN 911 → Page 1031

Information

GN 132.1 / GN 132.2 linear actuator connectors are normally supplied **mounted** only in connection with a linear actuator and for function control.

By means of the clamping screw on the clamping bores **d₁ / d₂** the movement can either be set or the linear actuator connector can be clamped (after setting of final adjustment).

The standard version of the clamping screws are socket cap screws with hexagonal socket DIN 912. They can be replaced by clamping kits GN 911 (article code see table of dimensions).

see also...

- Construction tubes GN 990* → Page 1027
- Linear actuators GN 291* → Page 1036
- Linear actuators GN 292* → Page 1038
- Linear actuators GN 293* → Page 1039

How to order (Single axis system, Aluminum)

1 **d₁**
2 **d₂**
3 **Identification No.**
4 **Finish**

GN 132.1-G40-B40-2-SW

How to order (Two-way axis system, St. Steel)

1 **d₁**
2 **d₂**
3 **Identification No.**
4 **Finish**

GN 132.2-G50-G50-2-SW

2.1
2.2
2.3
2.4
2.5
2.6
2.7
2.8
2.9