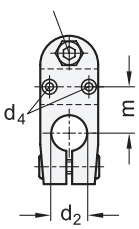
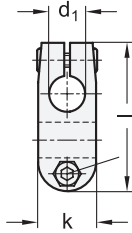


Clamping thread  $d_3$

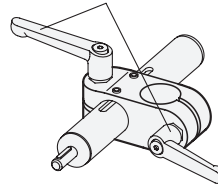


**GN 131.1**  
for single axis system



Clamping thread  $d_3$

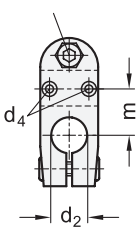
Clamping kit



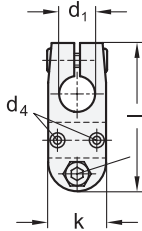
**3 Identification No.**

**2** with 2 Stainless Steel-Clamping screws DIN 912

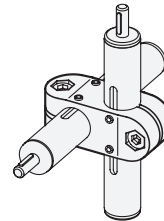
Clamping thread  $d_3$



**GN 131.2**  
for two-way axis system



Clamping thread  $d_3$



<b>1</b> $d_1$		<b>2</b> $d_2$		$d_3$	$d_4$	$k$	Length $l$	$m$	Clamping kit for $d_3$	
Bore B without slide bushing	Bore G with slide bushing	Bore B without slide bushing	Bore G with slide bushing	Clamping thread	Mounting screw on the follower	Clamping length			Lever Zinc die casting	Lever Stainless Steel
B 18	G 18	B 18	G 18	M 6	M 3	25	64	20	GN 911-M6-22	GN 911.3-M6-22

**Specification**

- Aluminium plastic coated black, RAL 9005, textured finish **● SW**
- Stainless Steel AISI CF-8 **● NI**
  - matt shot-blasted
  - Bore only with slide bushing (G18)
- Clamping bores mechanically machined
- Slide bushing Polyamide
- Socket cap screws DIN 912 Stainless Steel AISI 304
- Hexagon nuts DIN 985 Stainless Steel AISI 304
- Stainless Steel characteristics → Page 1144
- RoHS compliant

**Accessory**

- Clamping kits GN 911 / GN 911.3 → Page 1031

**Information**

GN 131.1 / GN 131.2 linear actuator connectors are normally supplied **mounted** only in connection with a linear actuator and for function control.

By means of the clamping screws on the guide bores  $d_1$  /  $d_2$  the movement can either be set or the linear actuator connector can be clamped (after setting of final adjustment).

The standard version of the clamping screws are socket cap screws with hexagonal socket DIN 912. They can be replaced by clamping kits GN 911 / GN 911.3 (article code see table of dimensions).

see also...

- Construction tubes GN 990 → Page 1027
- Linear actuators GN 291 → Page 1036
- Linear actuators GN 292 → Page 1038

How to order (Single axis system, Aluminum)

**GN 131.1-G18-B18-2-SW**

<b>1</b>	$d_1$
<b>2</b>	$d_2$
<b>3</b>	Identification No.
<b>4</b>	Finish

How to order (Two-way axis system, St. Steel)

**GN 131.2-G18-G18-2-NI**

<b>1</b>	$d_1$
<b>2</b>	$d_2$
<b>3</b>	Identification No.
<b>4</b>	Material