

# HCFE. | Oil circulation sights

Technopolymer



- 1
- 2
- 3
- 4
- 5
- 6
- 7
- 8
- 9
- 10
- 11
- 12
- 13
- 14
- 15
- RH

## MATERIAL

Transparent polyamide based (PA-T) technopolymer. Avoid contact with alcohol or detergents containing alcohol.

## PACKING RING

NBR synthetic rubber.

## MAXIMUM CONTINUOUS WORKING TEMPERATURE

100°C.

## TECHNICAL DATA

The tightening torque indicated in the table guarantees an optimal tightness, keeping the packing ring in the correct position.

## NOTE

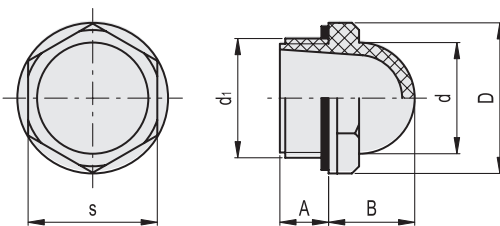
For use with other fluids with special additives, please contact ELESa Sales Department.

## ACCESSORIES ON REQUEST

Brass nut type GH. (see page 1201) for fitting to reservoirs with wall thickness smaller than 5 mm.



ELESa Original design



Code	Description	d1	A	B	D	d	s	Tightening torque [Nm]	⚖️
10851	HCFE.12-3/8	G 3/8	7.5	13	22.5	15	19	3+5	4
10901	HCFE.15-1/2	G 1/2	10.5	16	26	19	22	4+6	5
11001	HCFE.20-3/4	G 3/4	10.5	19.5	31.5	25	27	6+8	8
11101	HCFE.24-1	G 1	11	24	42	31	36	8+10	18
11111	HCFE.30-1¼	G1 1/4	11.5	26.5	46.5	38	40.5	12+15	22

Accessories for hydraulics