

## 2 Type

BI clamping arm vertical



Size (Piston-Ø)	max. clamping moment in Nm at 6 bar	$F_S$ in N Clamping force at r at 6 bar	$F_H$ in N Holding capacity at r at 6 bar	a	b -0,2	$d_1$ h8	$d_2$	$d_3$ H8	$d_4$	$d_5$	$h_1$	$h_2$	$l_1 -0,5$
20	60	1250	2300	10,5	10	28	M 5	7	4,2	M 5	16	16	150
32	150	2220	3040	15,5	12	40	M 6	9	5	G 1/8	21	21	206
40	300	3640	4060	18,5	16	50	M 8	11	6,8	G 1/8	26	26	244
50	475	4900	7200	21,5	18	60	M 10	13	8,5	G 1/8	31	31	279

Size (Piston-Ø)	$l_2 -0,5$	$l_3$	$l_4$	$l_5$	$l_6$	$l_7 -0,5$	$m_1 \pm 0,01$	$m_2$	$m_3 \pm 0,01$	$m_4 \pm 0,01$	$m_5 \pm 0,01$	$m_6$	r	s	t
20	171	70	21	4,5	21	97	12	7,5	17	34	22	13	47,5	32	13
32	237	91	31	6	31	133	18	10	25	51	30	22	67,5	42	15
40	282	104	38	7,5	38	155	22	13	30	62	37	25	82,5	52	18
50	323	110,5	44	8	44	174	27	12	47	71,5	44	35	96,5	62	21

## Specification

- Steel C45 blackened finish
- max. pressure 10 bar
- ISO-Fundamental Tolerances → Page 1132
- RoHS compliant

## Information

The pneumatic fastening clamps GN 865 is reached once the clamping arm is at the end of its stroke. For this reason the working stroke should be completed as closely as possible to the stroke end.

### see also...

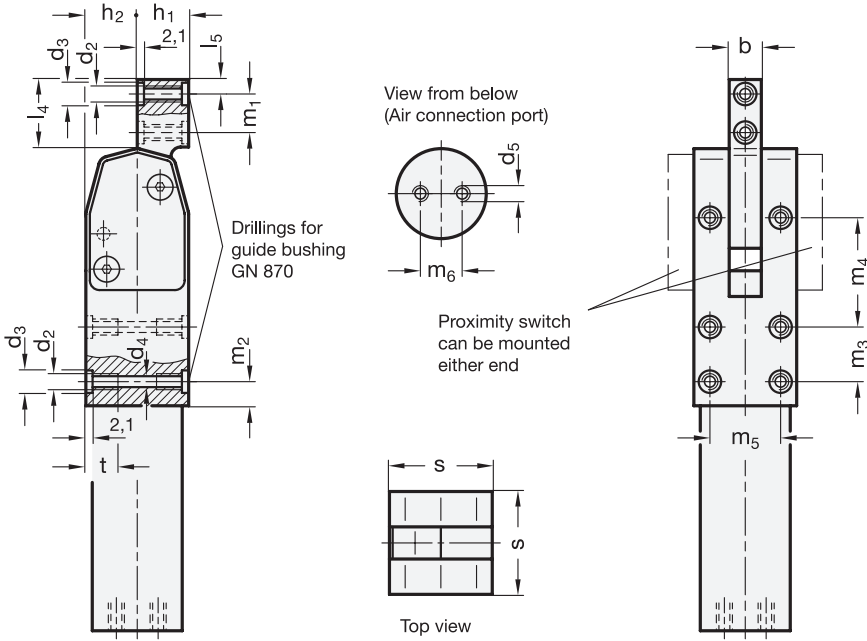
- Operating principle, mounting methods → Page 772
- Guide bushings GN 870 → Page 792
- Proximity switch with mounting bracket → Page 793
- Accessories → Page 783

### How to order

GN 865-40-BI

1 Size

2 Type



2.1

2.2

2.3

**2.4**

2.5



2.6

2.7

2.8

2.9