

**2** Type  
BL clamping arm horizontal



Size (Piston-Ø)	max. clamping moment in Nm at 6 bar	$F_S$ in N Clamping force at r at 6 bar	$F_H$ in N Holding capacity at r at 6 bar	a	b -0,2	$d_1$ h8	$d_2$	$d_3$ H8	$d_4$	$d_5$	$h_1$	$h_2$
20	60	2220	4070	27	10	28	M 5	7	4,2	M 5	16	51
32	150	4110	5620	36,5	12	40	M 6	9	5	G 1/8	21	75,5
40	300	6740	7530	44,5	16	50	M 8	11	6,8	G 1/8	26	91,5
50	475	9000	13300	52,5	18	60	M 10	13	8,5	G 1/8	31	114

Size (Piston-Ø)	$l_1$ -0,5	$l_2$	$l_3$	$l_4$	$l_5$	$m_1$ ±0,01	$m_2$	$m_3$ ±0,01	$m_4$ ±0,01	$m_5$	r	s	t
20	150	37,5	70	21,5	4,5	12	7,5	17	22	13	27	32	13
32	206	52	91	31	6	18	10	25	30	22	36,5	42	15
40	244	63	104	37	7,5	22	13	30	37	25	44,5	52	18
50	279	72,5	110,5	41,5	8	27	12	47	44	35	52,5	62	21

### Specification

- Steel C45 blackened finish
- max. pressure 10 bar
- ISO-Fundamental Tolerances → Page 1132
- RoHS compliant

### Information

The maximum clamping moment of the GN 864 pneumatic fastening clamps is reached once the clamping arm is at the end of its stroke. For this reason the working stroke should be completed as closely as possible to the stroke end.

see also...

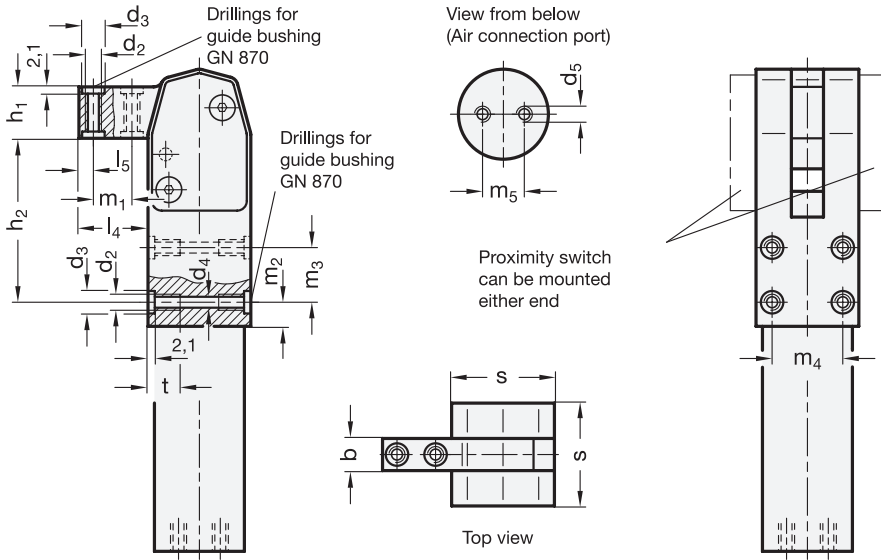
- Operating principle, mounting methods → Page 772
- Centering guide bushing accessories GN 870 → Page 792
- Proximity switch with mounting bracket → Page 793
- Accessories → Page 783

How to order

**GN864-20-BL**

**1** Size

**2** Type



2.1  
2.2  
2.3  
**2.4**  
2.5  
2.6  
2.7  
2.8  
2.9