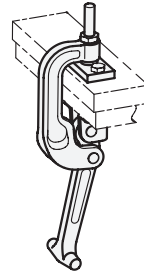


**Examples of application**



**3** Type  
C2 for screwing

**Spindle assembly GN 802**



**1** **2**

<b>h<sub>1</sub></b> max.	<b>l<sub>1</sub></b>	<b>F<sub>H</sub></b> in N Holding Capacity	<b>b<sub>1</sub></b>	<b>b<sub>2</sub></b>	<b>d<sub>1</sub></b>	<b>d<sub>2</sub></b>	<b>h<sub>2</sub></b>	<b>h<sub>3</sub></b>	<b>h<sub>4</sub></b>	<b>l<sub>2</sub></b>	<b>l<sub>3</sub></b>	<b>l<sub>4</sub></b>	<b>l<sub>5</sub></b>	<b>l<sub>6</sub></b>	<b>m</b>	<b>w<sub>1</sub></b> Stroke	<b>w<sub>2</sub></b> Adjustable range
40	32	15000	60	26	M 10	8,5	111	168	129	30	18	72	168	173	45	19	32
75	32	15000	60	26	M 10	8,5	146	168	164	30	18	72	168	207	45	19	32

**Specification**

- Clamp / Operating handle  
Steel  
- forged  
- blackened finish
- Bearing flange  
Sheet steel, blackened finish
- Spindle assembly  
Steel, blackened finish
- Counter plate / Bearing pin  
Steel, blackened finish
- **RoHS compliant**

**Information**

C-Clamps GN 855 feature an especially robust, sturdy and compact design, allowing them to be used under severe and demanding conditions, e.g. higher temperatures, dust, mist, etc.

The C-Clamps are normally installed and mounted at the clamping point. The counter plate (supplied loose) has a ball socket and is designed for attaching to the counter piece to be clamped. In connection with the ball-type bolt, this configuration ensures the precise positioning of the latch clamp.

If the counter plate is not to remain at the counter piece to be clamped, the clamping bracket may alternatively also be used to hold GN 802 toggle clamp spindle assemblies which have a pendulum-type bearing surface.

see also...

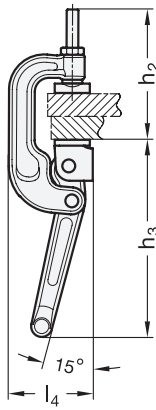
- *Toggle clamp spindle assemblies GN 802* → Page 767
- *Grub screws DIN 6332* → Page 592
- *Thrust pads GN 6311.1* → Page 595

**How to order**

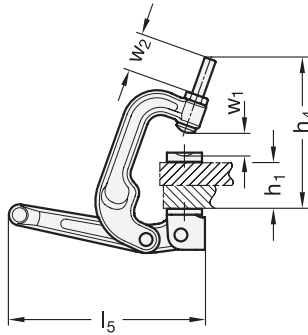
**GN855-40-32-C2**

- 1** Clamp width
- 2** Clamping height
- 3** Type

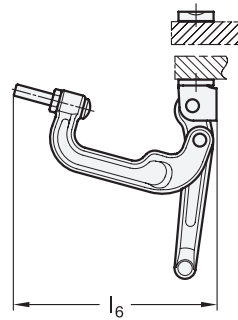
C-Clamp, closed



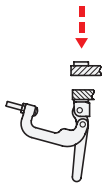
C-Clamp, loosened



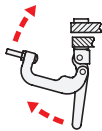
C-Clamp, opened



### Description of function



Place the pieces to be clamped into the clamping position, e.g. close the lid or place the piece to be clamped on top.



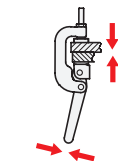
Then move the clamping bracket and the operating handle of the C-Clamp upwards.



Now move the clamping bracket forward such that the clamping bolt is located in the ball socket of the counter plate.



Move the operating handle downwards until the clamping force has exceeded the dead point.



When closed, the C-Clamp now holds its position on its own.

2.1  
2.2  
2.3  
2.4  
2.5  
2.6  
2.7  
2.8  
2.9