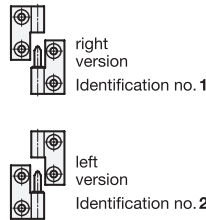
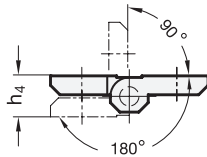


Type A

Swivelling range



Rostfrei
Inox
Stainless
Steel

4 Type

A 2x2 bores for countersunk screws

5 Identification no.

- 1 fixed bearing (pin) right
- 2 fixed bearing (pin) left

² l ₁	³ l ₂	d ₁	d ₂	h ₁	h ₂	h ₃	h ₄ +0,5	l ₃	m ₁	m ₂
40	40	5,3	4	9	5	5,5	11	16	25	25
50	50	6,4	6	11,5	6	6,5	13	21	30	30
60	60	8,3	8	15	8	8,5	17	26	36	36

Specification

- Zinc die casting **ZD**
- plastic coated
- black RAL 9005, textured finish ● **SW**
- silver RAL 9006, textured finish ● **SR**
- Stainless Steel AISI CF-8 **NI**
- matt shot-blasted **GS**
- Pin
- Stainless Steel AISI 303
- *Stainless Steel characteristics* → Page 1144
- *Load rating information* → Page 1156
- *RoHS compliant*

Information

- see also...
- *Hinges (not detachable) GN 237* → Page 878

How to order

¹	Material
²	l ₁
³	l ₂
⁴	Type
⁵	Identification no.
⁶	Finish

GN 337-ZD-40-40-A-1-SR

2.1
2.2
2.3
2.4
2.5
2.6
2.7
2.8
2.9