

## MATERIAL

Anodised aluminium.

## COLOUR

Natural, matte finish.

## ROTATING PIN

AISI 304 stainless steel.

## GUIDE BUSHINGS FOR PIN

Polyamide based (PA) technopolymer.

## STANDARD EXECUTION

Stainless steel self-tapping screws 4.2x15.9 DIN 7982 (narrow body of the hinge) and stainless steel M5x10 semi-rounded head screws (large body of the hinge). Supplied.

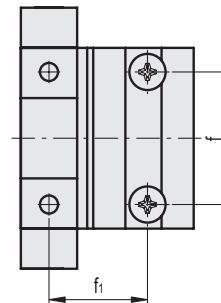
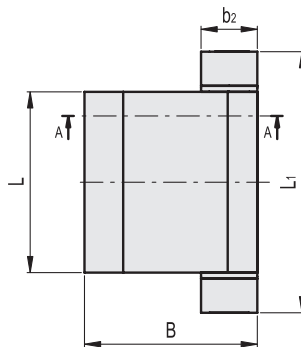
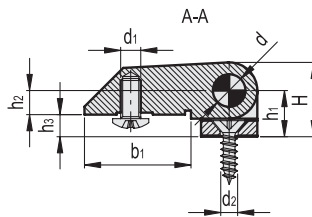
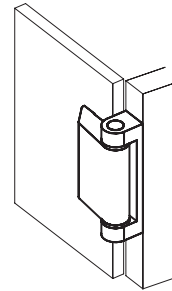
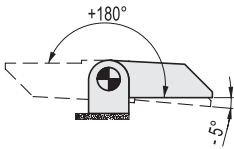
## FEATURES AND APPLICATIONS

The hinge is made up of two bodies with different dimensions (a narrow one and a larger one) and can be assembled for example on structures with thin frame or door. Supplied not assembled for an easy fixing.

## ROTATION ANGLE (APPROXIMATE VALUE)

Max 185° (-5° and +180° being 0° the condition where the two interconnected surfaces are on the same plane).

Do not exceed the rotation angle limit so as not to prejudice the hinge mechanical performance.



- 1
- 2
- 3
- 4
- 5
- 6
- 7
- 8
- 9
- 10
- 11
- 12
- 13
- 14
- 15
- RH

Code	Description	L	B	d1	d2	L1	f	f1	H	h1	h2	h3	b1	b2	d	⚖️
428251	CMD-AL-45-SH-4-M5	45	43	M5	4.2	65	33	24.5	18.5	11.5	6	5.5	26	14	8	90