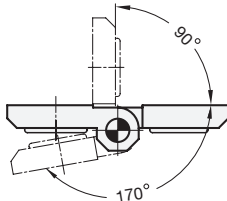
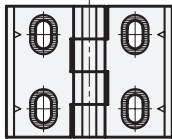
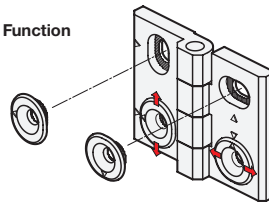


- 3 Type**
- H** horizontal adjustable
 - B** vertical adjustable
 - HB** vertical and/or horizontal adjustable

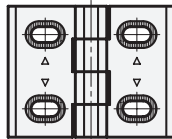
Swivelling range



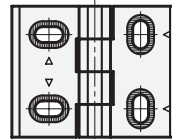
Function



Type H



Type B



Type HB

1

2

l_1	l_2	d_1	d_2	$h_1 \approx$	h_2	h_3	l_3	m_1	m_2	s
76	60	6,5	8	15	8	8,5	30	42	34	12

Specification

- Zinc die casting plastic coated black, textured finish
- Pin Stainless Steel AISI 303
- *Stainless Steel characteristics* → Page 1144
- *Load rating information* → Page 1156
- **RoHS compliant**

Information

Hinges GN 127 allow the technically and visually perfect positioning and alignment of a door in its frame.

The serrations at the wings of the hinge and at the adjusting bushes create a form lock which prevents the hinge from moving after installation. The tips of the arrows mark the 0 reference point for easier installation.

see also...

- *Hinges GN 238 (adjustable, Zinc die casting)* → Page 880

How to order

GN 127-76-60-HB

1	l_1
2	l_2
3	Type