



**MATERIAL**

Aluminium, matte finish.

**ROTATING PIN**

AISI 303 stainless steel.

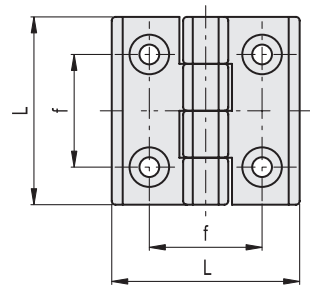
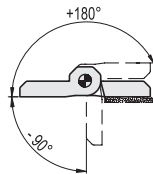
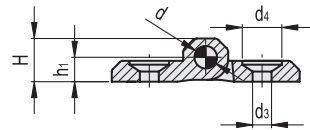
**STANDARD EXECUTION**

Pass-through holes for countersunk head screws.

**ROTATION ANGLE (APPROXIMATE VALUE)**

Max 270° (-90° and +180° being 0° the condition where the two interconnected surfaces are on the same plane).

Do not exceed the rotation angle limit so as not to prejudice the hinge mechanical performance.



Code	Description	L	d3	d4	f	H	h1	d	Δ
428431	CMM.30-BL-SH-4	30	4.3	8.5	18	7.5	4.5	3	12
428531	CMM.40-BL-SH-5	40	5.3	10.2	25	9	5	4	24
428631	CMM.50-BL-SH-6	50	6.4	12.5	30	11.5	6	6	43
428731	CMM.60-BL-SH-8	60	8.3	16.2	36	15	8	8	85