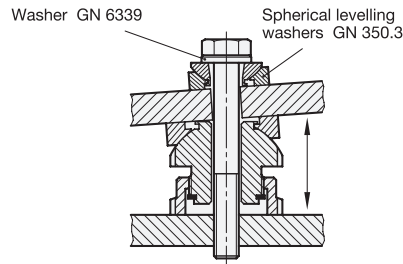
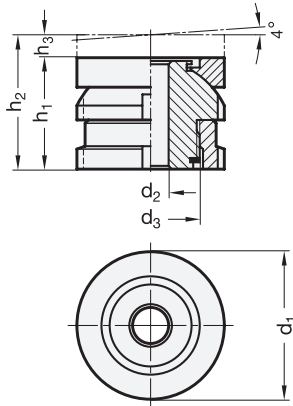


# GN 350.2

Steel / Stainless Steel

# Levelling sets

with spherical washer, without locknut



1 2 3

d <sub>1</sub>	d <sub>2</sub>	h <sub>1</sub>		d <sub>3</sub>	h <sub>2</sub>		h <sub>3</sub>		for screw	Static load F in kN				Code no. for C-Spanner
		Version			Version		Version			Steel		Stainless Steel		
		low	high		low	high	low	high		F <sub>1</sub>	F <sub>2</sub>	F <sub>1</sub>	F <sub>2</sub>	
25	5,5	22	35	M 15 x 1	26	50	4	15	M 5	40	33,4	27,1	22,24	DIN 1810-A25-28
25	6,6	22	35	M 15 x 1	26	50	4	15	M 6	40	30,7	27,1	20,26	DIN 1810-A25-28
32	6,6	26	43	M 20 x 1	31	63	5	20	M 6	65	55,7	43,4	36,56	DIN 1810-A30-32
32	9	26	43	M 20 x 1	31	63	5	20	M 8	65	48	43,4	30,86	DIN 1810-A30-32
32	11	26	43	M 20 x 1	31	63	5	20	M 10	65	37,9	43,4	23,41	DIN 1810-A30-32
45	11	34	54	M 30 x 1,5	41	79	7	25	M 10	120	92,9	84	64,01	DIN 1810-A45-50
45	13,5	34	54	M 30 x 1,5	41	79	7	25	M 12	120	80,4	84	54,82	DIN 1810-A45-50
45	17,5	34	54	M 30 x 1,5	41	79	7	25	M 16	120	45,5	84	28,90	DIN 1810-A45-50
58	17,5	44	70	M 40 x 1,5	53	102	9	32	M 16	210	136	148	92,90	DIN 1810-A58-62
58	22	44	70	M 40 x 1,5	53	102	9	32	M 20	210	90	148	59,08	DIN 1810-A58-62
58	26	44	70	M 40 x 1,5	53	102	9	32	M 24	210	37	148	20,30	DIN 1810-A58-62
70	22	50	83	M 50 x 1,5	60	123	10	40	M 20	330	210	225	136,08	DIN 1810-A68-75
70	26	50	83	M 50 x 1,5	60	123	10	40	M 24	330	157	225	97,30	DIN 1810-A68-75
70	33	50	83	M 50 x 1,5	60	123	10	40	M 30	330	53	225	20,60	DIN 1810-A68-75
80	26	56	94	M 60 x 2	68	144	12	50	M 24	495	322	323	195,30	DIN 1810-A80-90
80	33	56	94	M 60 x 2	68	144	12	50	M 30	495	218	323	118,60	DIN 1810-A80-90
80	39	56	94	M 60 x 2	68	144	12	50	M 36	495	101	323	38,20	DIN 1810-A80-90

## Specification

- Steel, 1.7225 (42 CrMo 4 V) zinc plated, blue passivated **ST**
- Stainless Steel AISI 303 (X 10 CrNiS 18-9) **NI**
- F<sub>1</sub>: max. total load
- F<sub>2</sub>: max. load after deduction of the max. preload
  - for screws 8.8, μ = 0,125 (Steel)
  - for screws 6.8, μ = 0,14 (Stainless Steel)
- RoHS compliant

## Accessory

- C-Spanner DIN 1810 (code no. see table)

4

## Information

Levelling sets GN 350.2 are used for levelling, adjusting and linking operations. The spherical washer allows precise installation of two non parallel planes at a required gradient up to ≈ 4°.

They comprise a threaded upper sleeve and a female threaded lower sleeve. The fine thread allows a stepless and precise setting and locking using the C-Spanner DIN 1810. A locking ring serves as a height limiter for the max. height.

see also...

- Levelling sets GN 350 (long version) → Page 548

### How to order

GN350.2-32-11-43-NI

- 1 d<sub>1</sub>
- 2 d<sub>2</sub>
- 3 h<sub>1</sub>
- 4 Material