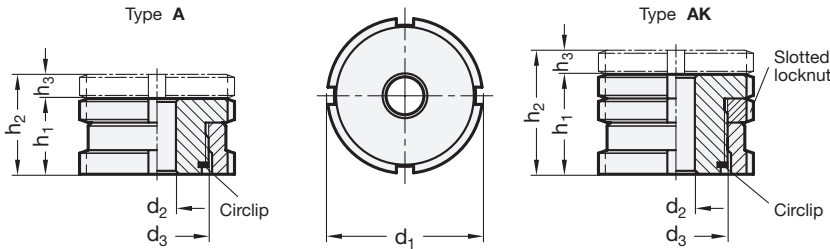


3 Type

A without lock nut

AK with lock nut



1 2

d ₁	d ₂	d ₃	h ₁		h ₂		h ₃ Adjustable range	for screw	Static load F in kN				Code no. for C-Spanner
			Type A	Type AK	Type A	Type AK			Steel		Stainless Steel		
									F ₁	F ₂	F ₁	F ₂	
25	5,5	M 15 x 1	15	20	19	24	4	M 5	40	33,4	27,1	22,4	DIN 1810-A25-28
25	6,6	M 15 x 1	15	20	19	24	4	M 6	40	30,7	27,1	20,2	DIN 1810-A25-28
32	6,6	M 20 x 1	18	24	23	29	5	M 6	65	55,7	43,4	36,5	DIN 1810-A30-32
32	9	M 20 x 1	18	24	23	29	5	M 8	65	48	43,4	30,8	DIN 1810-A30-32
32	11	M 20 x 1	18	24	23	29	5	M 10	65	37,9	43,4	23,4	DIN 1810-A30-32
45	11	M 30 x 1,5	22	29	29	36	7	M 10	120	92,9	84	64	DIN 1810-A45-50
45	13,5	M 30 x 1,5	22	29	29	36	7	M 12	120	80,4	84	54,8	DIN 1810-A45-50
45	17,5	M 30 x 1,5	22	29	29	36	7	M 16	120	45,5	84	28,9	DIN 1810-A45-50
58	17,5	M 40 x 1,5	28	37	37	46	9	M 16	210	136	148	92,9	DIN 1810-A58-62
58	22	M 40 x 1,5	28	37	37	46	9	M 20	210	90	148	59	DIN 1810-A58-62
58	26	M 40 x 1,5	28	37	37	46	9	M 24	210	37	148	20,3	DIN 1810-A58-62
70	22	M 50 x 1,5	33	44	43	54	10	M 20	330	210	225	136	DIN 1810-A68-75
70	26	M 50 x 1,5	33	44	43	54	10	M 24	330	157	225	97,3	DIN 1810-A68-75
70	33	M 50 x 1,5	33	44	43	54	10	M 30	330	53	225	20,6	DIN 1810-A68-75
80	26	M 60 x 2	38	49	50	61	12	M 24	495	322	323	195,3	DIN 1810-A80-90
80	33	M 60 x 2	38	49	50	61	12	M 30	495	218	323	118,6	DIN 1810-A80-90
80	39	M 60 x 2	38	49	50	61	12	M 36	495	101	323	38,2	DIN 1810-A80-90

Specification

- Steel, 1.7225 (42 CrMo 4 V) zinc plated, blue passivated
- Stainless Steel AISI 303 (X 10 CrNiS 18-9)
- F₁: max. total load
- F₂: max. total load after deduction of the max. preload
 - for screws 8.8, μ = 0,125 (Steel)
 - for screws 6.8, μ = 0,14 (Stainless Steel)

• RoHS compliant

Accessory

- C-Spanner DIN 1810 (code no. see table)

4

Information

Levelling sets GN 350.1 are used for levelling, adjusting and linking operations if small dimensions are given.

They comprise a threaded upper sleeve and a female threaded lower sleeve. The fine thread allows a stepless and precise setting and locking using the C-Spanner DIN 1810. A locking ring serves as a height limiter for the max. height.

see also...

- Levelling sets GN 350 (long version) → Page 548

How to order

1 d₁
2 d₂
3 Type
4 Material
GN350.1-25-6,6-AK-ST

1 d₁
2 d₂
3 Type
4 Material