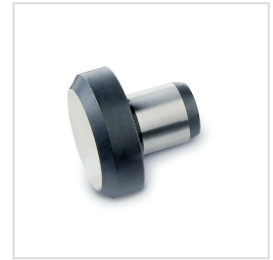
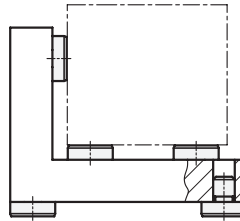


Example of Application



1	2		
d₁	d₂ n6	h h9	Length l
6	4	2,5	6,5
6	4	4,5	8,5
6	4	5	6
10	6	4,5	8,5
10	6	8	8
16	8	5	10
16	8	13	10
20	10	6	12
20	10	12	12
25	12	8	14
25	12	20	14
25	12	30	14
30	16	25	20
30	16	40	20
30	16	50	20
30	16	65	20
40	20	13	20
40	20	32	20

Specification

- Steel hardened
- *ISO-Fundamental Tolerances* → Page 1132
- RoHS compliant

Information

Headed dowels GN 6321.1 can also be used as feet.
 see also...
 • *Headed dowels DIN 6321* → Page 578

How to order 6321.1-25-8	1	d₁
	2	h