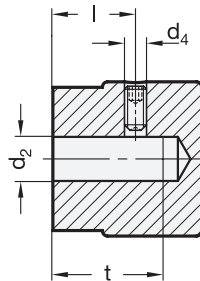


0 resp. arrow opposite grub screw



**Rostfrei** ROSTFREI  
Inox  
Stainless  
Steel

**3 Type**

- A** with arrow
- B** neutral, without arrow or scale
- S** with standard scale 0...9  
20 graduations

<b>1</b> $d_1$	<b>2</b> $d_2$ H8 Bore		$d_3$	$d_4$	$h_1$	$h_2$	Length l	t min.
24	B 5	B 6	22	M 4	24	8	12	18
28	B 6	B 8	26	M 4	27	9	13	20

**Specification**

- Stainless Steel AISI 304  
- matt shot-blasted **MT**
- Scale (Type S) and arrow (Type A) engraved with laser precision
- Stainless Steel-Grub screw DIN 916 with internal hexagon and serrated point
- *ISO-Fundamental Tolerances* → Page 1132
- *Stainless Steel characteristics* → Page 1144
- **RoHS compliant**

**4**

**Information**

Scale and arrow on the Stainless Steel-control knobs GN 436.1 are indelibly marked and easily legible.

Besides the standard scale (Type S) the control knobs can be supplied with any type of graduation.

Regarding design, numbering run, numbering position and numbering sequence of the scale please see the layout for scale knobs on the order sheet „How to order Graduations“ → Page 337

see also...

- *Clamping elements GN 826 (for adjustable spindles)* → New products

**How to order**

**GN436.1-28-B6-S-MT**

- 1**  $d_1$
- 2**  $d_2$
- 3** Type
- 4** Finish

1.1  
1.2  
1.3  
1.4  
1.5  
1.6  
1.7  
1.8  
1.9