

# P.111+x | Revolving handles

Duroplast

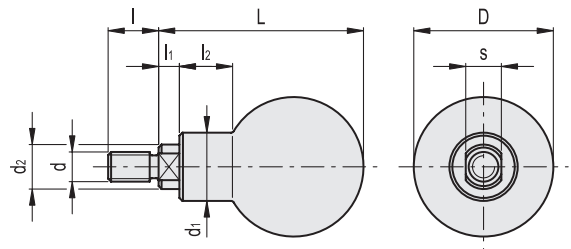


## MATERIAL

Phenolic based (PF) Duroplast handle, black colour, glossy finish.

## STANDARD EXECUTION

Zinc-plated steel threaded shank, two flat faces for fitting with 12 mm spanner.



Code	Description	D	L	d <sub>6g</sub>	d <sub>1</sub>	d <sub>2</sub>	l	l <sub>1</sub>	l <sub>2</sub>	s	△
45981	P.111/37+x-M8	37	54	M8	18	15	15	7	13	12	55
46011	P.111/47+x-M10	47	69	M10	23	15	17	7	17	12	130



Fixed & revolving handles