

M.990 | Guard safety handles

Technopolymer



- 1
- 2
- 3
- 4
- 5
- 6
- 7
- 8
- 9
- 10
- 11
- 12
- 13
- 14
- 15
- RH

MATERIAL

Polyamide based (PA) technopolymer handle, black colour, matte finish.

CAP

Technopolymer in standard colours: black, orange, grey, yellow, light-blue, red, matte finish, snap-in assembly, removable by a screwdriver.

STANDARD EXECUTION

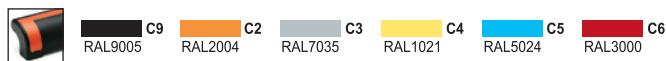
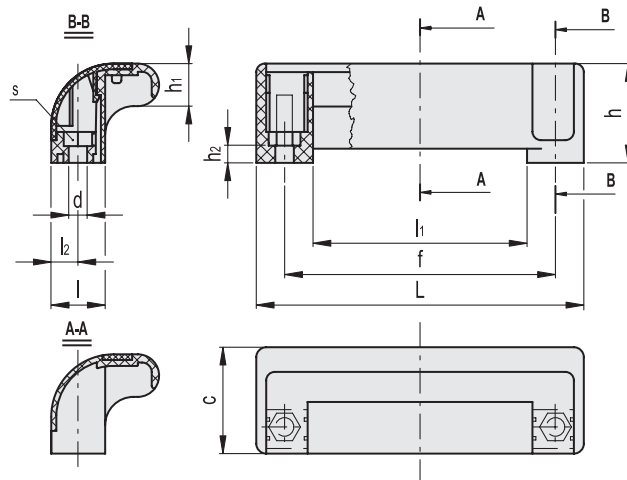
Pass-through holes for cylindrical-head screws with hexagon socket, hexagonal-head screws or standard lock nuts.

FEATURES AND APPLICATIONS

M.990 handles have been especially designed to fit machine guards or automation systems with double-leaf door. The special closed design of the handle represents a safety element for the operator's fingers. Moreover, the coloured cover improves the visibility of the handle and offers the possibility of product customisation.



FMdesign



Code	Description	L	f	d	s	h	h1	h2	c	l	l1	l2	⚖️
138511	M.990/115 EH-6-C9	115	95.5±0.5	6.5	10	35	15	6	37.5	19	75.5	9.5	33
138512	M.990/115 EH-6-C2	115	95.5±0.5	6.5	10	35	15	6	37.5	19	75.5	9.5	33
138513	M.990/115 EH-6-C3	115	95.5±0.5	6.5	10	35	15	6	37.5	19	75.5	9.5	33
138514	M.990/115 EH-6-C4	115	95.5±0.5	6.5	10	35	15	6	37.5	19	75.5	9.5	33
138515	M.990/115 EH-6-C5	115	95.5±0.5	6.5	10	35	15	6	37.5	19	75.5	9.5	33
138516	M.990/115 EH-6-C6	115	95.5±0.5	6.5	10	35	15	6	37.5	19	75.5	9.5	33

Lift & Pull handles