

MATERIAL

Glass-fibre reinforced polyamide based (PA) technopolymer, resistant to high temperatures, black colour, matte finish.

STANDARD EXECUTION

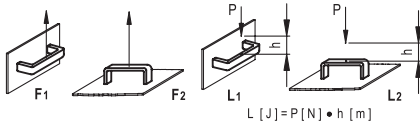
Brass bosses, threaded blind holes.

MAXIMUM CONTINUOUS TEMPERATURE

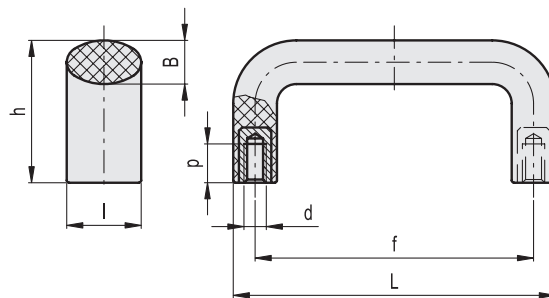
200°C.

TECHNICAL DATA

Tensile stress and impact strength: F1, F2, L1 and L2 values reported in the table are the result of breaking tests carried out with the appropriate dynamometric equipment under the test conditions shown in the figure with ambient temperature.



ELESA Original design



Code	Description	L	f	d6H	h	B	l	p	F1 [N]	F2 [N]	L1 [J]	L2 [J]	⚖️
37502	M.643/100 B-M6 HT	100	86±0.5	M6	44	14	23	12	2400	2400	12	6	59
37510	M.643/140 B-M6 HT	134	117±0.5	M6	49	15	25	12	2500	3400	8	12	85
37511	M.643/140 B-M8 HT	134	117±0.5	M8	49	15	25	13	2500	3400	8	12	87
37551	M.643/200 B-M8 HT	196	179±1	M8	57	16	27	13	1900	2600	11	17	132

- 1
- 2
- 3
- 4
- 5
- 6
- 7
- 8
- 9
- 10
- 11
- 12
- 13
- 14
- 15
- RH