

- 1
- 2
- 3
- 4
- 5
- 6
- 7
- 8
- 9
- 10
- 11
- 12
- 13
- 14
- 15
- RH
- 

**MATERIAL**

Glass-fibre reinforced polyamide based (PA) technopolymer, grey-black colour, matte finish.

**CAP**

Glass-fibre reinforced polyamide based (PA) technopolymer, in Ergostyle colours, matte finish, press-fit assembly. Available also as accessory sold separately (see table ECA.).

Code	Description	Cap for
29753-*	ECA.W3-*	ESN.55
29754-*	ECA.W4-*	ESN.70

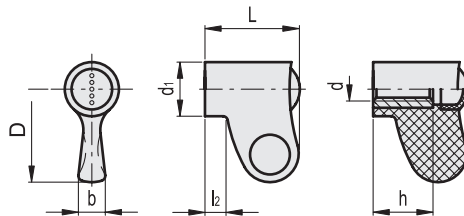
\* Complete with colour index (C1, ..., C6).

**STANDARD EXECUTION**

Brass boss, threaded pass-through hole.

**ERGONOMY AND DESIGN**

The slightly concave marks on the wing help to position the fingers in order to apply the maximum force when turning.



\* Complete with colour index, example: 225236-C2 ESN.55 B-M6-C2

- C1**  
RAL7021
- C2**  
RAL2004
- C3**  
RAL7035
- C4**  
RAL1021
- C5**  
RAL5024
- C6**  
RAL3000

Code	Description	D	d6H	L	d1	l2	b	h	⚖
225236-*	ESN.55 B-M6-*	27.5	M6	28	16	6.5	8	18	15
225241-*	ESN.55 B-M8-*	27.5	M8	28	16	6.5	8	18	14
225406-*	ESN.70 B-M8-*	35	M8	36	20	8	10	20	29
225411-*	ESN.70 B-M10-*	35	M10	36	20	8	10	20	28