

MCT. | Fluted grip knobs

Technopolymer, assembly with screws



- 1
- 2
- 3
- 4
- 5
- 6
- 7
- 8
- 9
- 10
- 11
- 12
- 13
- 14
- 15

MATERIAL

Polyamide based (PA) technopolymer handle, black colour, matte finish.

CLOSING CAP

Polypropylene based (PP) technopolymer, orange or black colour, glossy finish with matte central surface, snap-in mounting.

STANDARD EXECUTION

Assembly by means of hexagon head screws or standard lock nuts (not supplied) to put in place inside the knob by pressing.

SPECIAL EXECUTIONS ON REQUEST

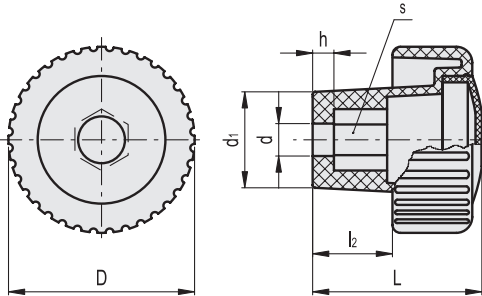
- On the surface of the closing cap words, marks, graphic symbols, etc... can be tampprinted in colours.

ASSEMBLY INSTRUCTIONS

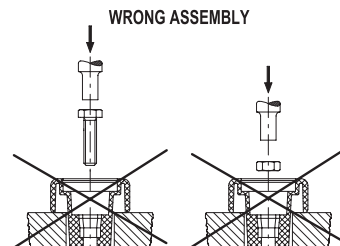
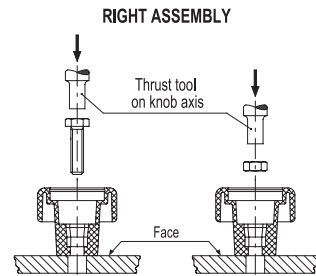
1. The base of the knob should rest on a flat surface.
2. Insert the screw or the lock nut into the knob hole by means of a thrust tool.
3. Push until the insert is completely fitted in.
4. Assemble the snap-in closing cap.



FMdesign



Code	Description	D	d	L	d1	l2	h	s	⚖️
138711	MCT.35 EH-5-C2	35	5	32	18	15	4	8	12
138712	MCT.35 EH-5-C9	35	5	32	18	15	4	8	12
138721	MCT.35 EH-6-C2	35	6	32	18	15	4	10	11
138722	MCT.35 EH-6-C9	35	6	32	18	15	4	10	11
138731	MCT.35 EH-8-C2	35	8	32	18	15	4	13	10
138732	MCT.35 EH-8-C9	35	8	32	18	15	4	13	10
138751	MCT.50 EH-6-C2	50	6	40	23	21	5	10	23
138752	MCT.50 EH-6-C9	50	6	40	23	21	5	10	23
138761	MCT.50 EH-8-C2	50	8	40	23	21	5	13	22
138762	MCT.50 EH-8-C9	50	8	40	23	21	5	13	22
138771	MCT.50 EH-10-C2	50	10	40	23	21	5	17	21
138772	MCT.50 EH-10-C9	50	10	40	23	21	5	17	21
138791	MCT.70 EH-8-C2	70	8	71	30.5	40	9	13	64
138792	MCT.70 EH-8-C9	70	8	71	30.5	40	9	13	64
138801	MCT.70 EH-10-C2	70	10	71	30.5	40	9	17	63
138802	MCT.70 EH-10-C9	70	10	71	30.5	40	9	17	63
138811	MCT.70 EH-12-C2	70	12	71	30.5	40	9	19	62
138812	MCT.70 EH-12-C9	70	12	71	30.5	40	9	19	62
138821	MCT.70 EH-14-C2	70	14	71	30.5	40	9	22	61
138822	MCT.70 EH-14-C9	70	14	71	30.5	40	9	22	61



Clamping knobs