



MATERIAL

Glass-fibre reinforced polyamide based (PA) technopolymer, chrome-plated, glossy finish.

STANDARD EXECUTION

Brass boss, tapped blind hole.

FEATURES AND APPLICATIONS

The exclusive five-lobe shape (ELESA original design) offers the operator's fingers a proper grip and prevents unhealthy residues from depositing thanks to its solid shape without cavities.

CHEMICAL AGENTS RESISTANCE

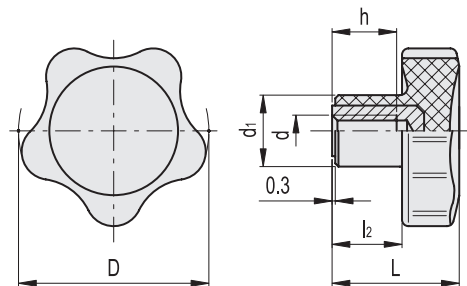
This knob is particularly suitable for applications on machines and equipment whose parts, for hygienic reasons, must be frequently cleaned by using water jets or steam.

The chrome-plating makes the surface finish semi-glossy and homogeneous to facilitate cleaning operations.

The chrome-plated surface is resistant to wear, scrapes and shocks. In laboratory tests carried out at ambient temperature (23°C), the chrome-plated surface revealed to be resistant to: sea water, detergents, acetone, ethyl alcohol, formic acid, chlorine solutions.



ELESA Original design



Code	Description	D	d6H	L	d1	l2	h	△
152702	VC.692/32-CR-B-M6	32	M6	22.5	14	12.5	10	14
152712	VC.692/40-CR-B-M8	40	M8	26	15	14	13	23
152722	VC.692/50-CR-B-M10	50	M10	31	18	17	17	40
152731	VC.692/60-CR-B-M10	60	M10	36.5	21	21	20	63