

- 1
- 2
- 3
- 4
- 5
- 6
- 7
- 8
- 9
- 10
- 11
- 12
- 13
- 14
- 15
- RH

**VIBRATION-DAMPING BODY**

Natural rubber NR, black colour.  
Hardness 40, 55, 70 Shore A ±5.

**STANDARD EXECUTIONS**

- **DVC.1:** zinc-plated steel plates and threaded studs.
- **DVC.1-SST:** AISI 304 stainless steel plates and threaded studs.
- **DVC.2:** zinc-plated steel plates, threaded stud and boss, threaded blind hole.
- **DVC.2-SST:** AISI 304 stainless steel plates, threaded stud and boss, threaded blind hole.
- **DVC.3:** zinc-plated steel plates and bosses, threaded blind holes.
- **DVC.3-SST:** AISI 304 stainless steel plates and bosses, threaded blind holes.

**FEATURES AND APPLICATIONS**

DVC. vibration-damping elements have been designed to damp vibrations, shocks and noises produced by moving bodies or non-balanced vibrating masses of equipment and machines.

Unlike DVA vibration-damping elements, under pressure these articles allow more lateral movement without leaving the vertical plane of the metal insert.

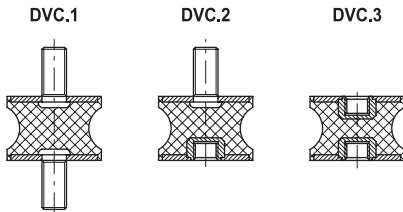
Vibrations can cause:

- malfunctioning and reduction of the machine lifespan and/or of the adjacent ones;
- damage to operator's health;
- noise.

See Technical data and guidelines for the choice.

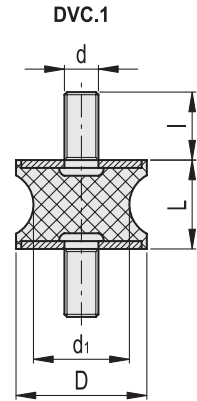
**SPECIAL EXECUTIONS ON REQUEST**

Natural rubber NR, hardness 40, 70 Shore A ±5, for executions with AISI 304 stainless steel base.



DVC.1

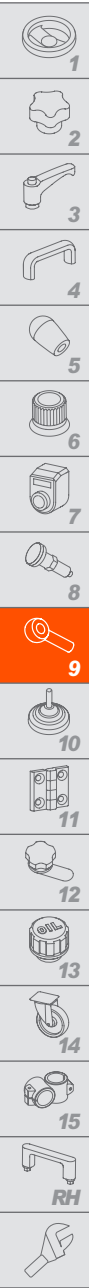
Code	Description	D	L	d	d1	l	Max load [N]	Max. deflection [mm]	Stiffness [N/mm]
433201	DVC.1-10-4,5-8-M4-10-40	10	8	M4	4,5	10	43	2	22
433001	DVC.1-10-4,5-8-M4-10-55	10	8	M4	4,5	10	80	2	40
433401	DVC.1-10-4,5-8-M4-10-70	10	8	M4	4,5	10	105	2	53
433206	DVC.1-10-8-10-M4-10-40	10	10	M4	8	10	37	2.5	15
433006	DVC.1-10-8-10-M4-10-55	10	10	M4	8	10	69	2.5	28
433406	DVC.1-10-8-10-M4-10-70	10	10	M4	8	10	98	2.5	39
433211	DVC.1-15-8,5-15-M4-10-40	15	15	M4	8,5	10	113	3.75	30
433011	DVC.1-15-8,5-15-M4-10-55	15	15	M4	8,5	10	154	3.75	41
433411	DVC.1-15-8,5-15-M4-10-70	15	15	M4	8,5	10	207	3.75	55
433216	DVC.1-15-12-15-M4-10-40	15	15	M4	12	10	121	3.75	32
433016	DVC.1-15-12-15-M4-10-55	15	15	M4	12	10	163	3.75	43
433416	DVC.1-15-12-15-M4-10-70	15	15	M4	12	10	221	3.75	59
433231	DVC.1-20-14-15-M6-18-40	20	15	M6	14	18	211	3.75	56
433031	DVC.1-20-14-15-M6-18-55	20	15	M6	14	18	273	3.75	73
433431	DVC.1-20-14-15-M6-18-70	20	15	M6	14	18	325	3.75	87
433233	DVC.1-20-14-19-M6-18-40	20	19	M6	14	18	193	4.75	41
433033	DVC.1-20-14-19-M6-18-55	20	19	M6	14	18	238	4.75	50
433433	DVC.1-20-14-19-M6-18-70	20	19	M6	14	18	302	4.75	64
433235	DVC.1-20-14-20-M6-18-40	20	20	M6	14	18	191	5	38
433035	DVC.1-20-14-20-M6-18-55	20	20	M6	14	18	231	5	46
433435	DVC.1-20-14-20-M6-18-70	20	20	M6	14	18	300	5	60
433241	DVC.1-21-16-22-M6-18-40	21	22	M6	16	18	205	5.5	37
433041	DVC.1-21-16-22-M6-18-55	21	22	M6	16	18	268	5.5	49
433441	DVC.1-21-16-22-M6-18-70	21	22	M6	16	18	315	5.5	57
433221	DVC.1-20-12-30-M6-18-40	20	30	M6	12	18	126	7.5	17
433021	DVC.1-20-12-30-M6-18-55	20	30	M6	12	18	194	7.5	26
433421	DVC.1-20-12-30-M6-18-70	20	30	M6	12	18	217	7.5	29
433237	DVC.1-20-14-30-M6-18-40	20	30	M6	14	18	475	7.5	63
433037	DVC.1-20-14-30-M6-18-55	20	30	M6	14	18	202	7.5	27
433437	DVC.1-20-14-30-M6-18-70	20	30	M6	14	18	301	7.5	40
433251	DVC.1-25-18-20-M6-18-40	25	20	M6	18	18	539	5	108
433051	DVC.1-25-18-20-M6-18-55	25	20	M6	18	18	887	5	177
433451	DVC.1-25-18-20-M6-18-70	25	20	M6	18	18	1332	5	266
433256	DVC.1-25-20-20-M6-18-40	25	20	M6	20	18	560	5	112
433056	DVC.1-25-20-20-M6-18-55	25	20	M6	20	18	902	5	180
433456	DVC.1-25-20-20-M6-18-70	25	20	M6	20	18	1380	5	276
433266	DVC.1-30-22-20-M8-20-40	30	20	M8	22	20	738	5	148
433066	DVC.1-30-22-20-M8-20-55	30	20	M8	22	20	1087	5	217
433466	DVC.1-30-22-20-M8-20-70	30	20	M8	22	20	2005	5	401
433261	DVC.1-30-18-25-M8-20-40	30	25	M8	18	20	436	6.25	70
433061	DVC.1-30-18-25-M8-20-55	30	25	M8	18	20	671	6.25	107
433461	DVC.1-30-18-25-M8-20-70	30	25	M8	18	20	1342	6.25	215
433276	DVC.1-35-31-15-M8-20-40	35	15	M8	31	20	1120	3.75	299
433076	DVC.1-35-31-15-M8-20-55	35	15	M8	31	20	2097	3.75	559
433476	DVC.1-35-31-15-M8-20-70	35	15	M8	31	20	3215	3.75	857



DVC.1 - 10 - 4.5 - 8 - M4 - 10 - 55  
 D d1 L d l Shore A



Machine elements

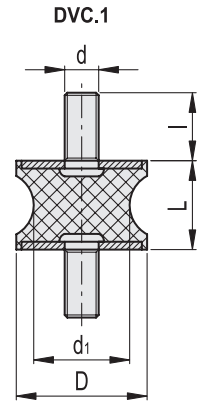


Machine elements

10

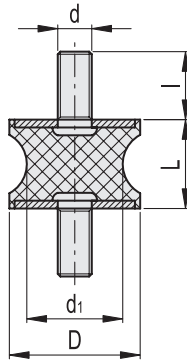
DVC.1

Code	Description	D	L	d	d1	l	Max load [N]	Max. deflection [mm]	Stiffness [N/mm]
433271	DVC.1-35-25-34-M8-20-40	35	34	M8	25	20	1073	8.5	126
433071	DVC.1-35-25-34-M8-20-55	35	34	M8	25	20	1564	8.5	184
433471	DVC.1-35-25-34-M8-20-70	35	34	M8	25	20	2415	8.5	284
433285	DVC.1-40-30-25-M8-23-40	40	25	M8	30	23	1823	6.25	292
433085	DVC.1-40-30-25-M8-23-55	40	25	M8	30	23	2430	6.25	389
433485	DVC.1-40-30-25-M8-23-70	40	25	M8	30	23	3378	6.25	540
433283	DVC.1-40-25-30-M8-23-40	40	30	M8	25	23	937	7.5	125
433083	DVC.1-40-25-30-M8-23-55	40	30	M8	25	23	1621	7.5	216
433483	DVC.1-40-25-30-M8-23-70	40	30	M8	25	23	2246	7.5	299
433289	DVC.1-40-33-30-M8-23-40	40	30	M8	33	23	1007	7.5	134
433089	DVC.1-40-33-30-M8-23-55	40	30	M8	33	23	1873	7.5	250
433489	DVC.1-40-33-30-M8-23-70	40	30	M8	33	23	2423	7.5	323
433281	DVC.1-40-20-48-M8-23-40	40	48	M8	20	23	498	12	42
433081	DVC.1-40-20-48-M8-23-55	40	48	M8	20	23	705	12	59
433481	DVC.1-40-20-48-M8-23-70	40	48	M8	20	23	1123	12	94
433287	DVC.1-40-32-50-M8-23-40	40	50	M8	32	23	521	12.5	42
433087	DVC.1-40-32-50-M8-23-55	40	50	M8	32	23	795	12.5	64
433487	DVC.1-40-32-50-M8-23-70	40	50	M8	32	23	1321	12.5	106
433296	DVC.1-50-46-15-M10-28-40	50	15	M10	46	28	1027	3.75	274
433096	DVC.1-50-46-15-M10-28-55	50	15	M10	46	28	2430	3.75	648
433496	DVC.1-50-46-15-M10-28-70	50	15	M10	46	28	3385	3.75	903
433291	DVC.1-50-42-30-M10-28-40	50	30	M10	42	28	1095	7.5	146
433091	DVC.1-50-42-30-M10-28-55	50	30	M10	42	28	1523	7.5	203
433491	DVC.1-50-42-30-M10-28-70	50	30	M10	42	28	2271	7.5	303
433293	DVC.1-55-44-45-M10-28-40	55	45	M10	44	28	911	11.25	81
433093	DVC.1-55-44-45-M10-28-55	55	45	M10	44	28	1328	11.25	118
433493	DVC.1-55-44-45-M10-28-70	55	45	M10	44	28	1974	11.25	175
433301	DVC.1-57-25-45-M10-28-40	57	45	M10	25	28	902	11.25	80
433101	DVC.1-57-25-45-M10-28-55	57	45	M10	25	28	1222	11.25	109
433501	DVC.1-57-25-45-M10-28-70	57	45	M10	25	28	1765	11.25	157
433306	DVC.1-60-49-60-M10-28-40	60	60	M10	49	28	2188	15	146
433106	DVC.1-60-49-60-M10-28-55	60	60	M10	49	28	3785	15	252
433506	DVC.1-60-49-60-M10-28-70	60	60	M10	49	28	4325	15	288
433311	DVC.1-70-45-53-M12-37-40	70	53	M12	45	37	1897	13.25	143
433111	DVC.1-70-45-53-M12-37-55	70	53	M12	45	37	2114	13.25	160
433511	DVC.1-70-45-53-M12-37-70	70	53	M12	45	37	3228	13.25	244
433316	DVC.1-72-64-33,5-M12-37-40	72	33,5	M12	64	37	2875	8.375	343
433116	DVC.1-72-64-33,5-M12-37-55	72	33,5	M12	64	37	4170	8.375	498
433516	DVC.1-72-64-33,5-M12-37-70	72	33,5	M12	64	37	7315	8.375	873
433321	DVC.1-75-60-40-M12-37-40	75	40	M12	60	37	2409	10	241
433121	DVC.1-75-60-40-M12-37-55	75	40	M12	60	37	3610	10	361
433521	DVC.1-75-60-40-M12-37-70	75	40	M12	60	37	6988	10	699
433326	DVC.1-95-80-75-M16-41-40	95	75	M16	80	41	7584	18.75	404
433126	DVC.1-95-80-75-M16-41-55	95	75	M16	80	41	10865	18.75	579
433526	DVC.1-95-80-75-M16-41-70	95	75	M16	80	41	13263	18.75	707



DVC.1 - 10 - 4.5 - 8 - M4 - 10 - 55  
 D d1 L d l Shore A

DVC.1-SST



DVC.1 - 10 - 4.5 - 8 - SST - M4 - 10 - 55  
 D d1 L Stainless steel d l Shore A

DVC.1-SST

INOX STAINLESS STEEL

Code	Description	D	L	d	d1	l	Max load [N]	Max. deflection [mm]	Stiffness [N/mm]
433601	DVC.1-10-4,5-8-SST-M4-10-55	10	8	M4	4,5	10	80	2	40
433606	DVC.1-10-8-10-SST-M4-10-55	10	10	M4	8	10	69	2.5	28
433611	DVC.1-15-8,5-15-SST-M4-10-55	15	15	M4	8,5	10	113	3.75	30
433616	DVC.1-15-12-15-SST-M4-10-55	15	15	M4	12	10	163	3.75	43
433631	DVC.1-20-14-15-SST-M6-18-55	20	15	M6	14	18	273	3.75	73
433633	DVC.1-20-14-19-SST-M6-18-55	20	19	M6	14	18	238	4.75	50
433635	DVC.1-20-14-20-SST-M6-18-55	20	20	M6	14	18	231	5	46
433641	DVC.1-21-16-22-SST-M6-18-55	21	22	M6	16	18	205	5.5	37
433621	DVC.1-20-12-30-SST-M6-18-55	20	30	M6	12	18	280	7.5	37
433637	DVC.1-20-14-30-SST-M6-18-55	20	30	M6	14	18	507	7.5	68
433651	DVC.1-25-18-20-SST-M6-18-55	25	20	M6	18	18	887	5	177
433656	DVC.1-25-20-20-SST-M6-18-55	25	20	M6	20	18	560	5	112
433666	DVC.1-30-22-20-SST-M8-20-55	30	20	M8	22	20	1087	5	217
433661	DVC.1-30-18-25-SST-M8-20-55	30	25	M8	18	20	671	6.25	107
433676	DVC.1-35-31-15-SST-M8-20-55	35	15	M8	31	20	2097	3.75	559
433671	DVC.1-35-25-34-SST-M8-20-55	35	34	M8	25	20	1564	8.5	184
433685	DVC.1-40-30-25-SST-M8-23-55	40	25	M8	30	23	2430	6.25	389
433683	DVC.1-40-25-30-SST-M8-23-55	40	30	M8	25	23	1621	7.5	216
433689	DVC.1-40-33-30-SST-M8-23-55	40	30	M8	33	23	1873	7.5	250
433681	DVC.1-40-20-48-SST-M8-23-55	40	48	M8	20	23	705	12.5	56
433687	DVC.1-40-32-50-SST-M8-23-55	40	50	M8	32	23	795	12.5	64
433696	DVC.1-50-46-15-SST-M10-28-55	50	15	M10	46	28	2430	3.75	648
433691	DVC.1-50-42-30-SST-M10-28-55	50	30	M10	42	28	1523	7.5	203
433693	DVC.1-55-44-45-SST-M10-28-55	55	45	M10	44	28	1328	11.25	118
433701	DVC.1-57-25-45-SST-M10-28-55	57	45	M10	25	28	1222	11.25	109
433706	DVC.1-60-49-60-SST-M10-28-55	60	60	M10	49	28	3785	15	252
433711	DVC.1-70-45-53-SST-M12-37-55	70	53	M12	45	37	2114	13.25	160
433716	DVC.1-72-64-33,5-SST-M12-37-55	72	33,5	M12	64	37	4170	8.375	498
433721	DVC.1-75-60-40-SST-M12-37-55	75	40	M12	60	37	3610	10	361
433726	DVC.1-95-80-75-SST-M16-41-55	95	75	M16	80	41	10865	18.75	579

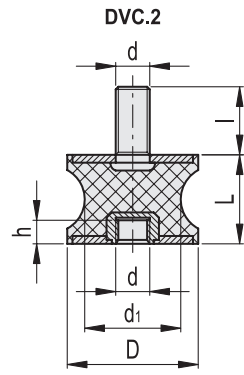




Machine elements

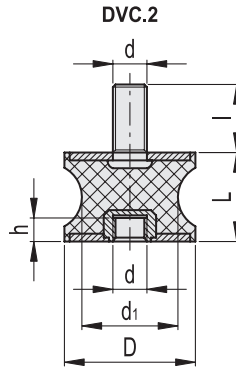
12

DVC.2 - 10 - 8 - 10 - M4 - 10 - 55  
 D d<sub>1</sub> L d l Shore A



DVC.2

Code	Description	D	L	d	d <sub>1</sub>	l	h	Max load [N]	Max. deflection [mm]	Stiffness [N/mm]
433901	DVC.2-10-8-10-M4-10-40	10	10	M4	8	10	4	94	2.5	37
433751	DVC.2-10-8-10-M4-10-55	10	10	M4	8	10	4	43	2.5	17
434051	DVC.2-10-8-10-M4-10-70	10	10	M4	8	10	4	81	2.5	32
433911	DVC.2-15-8,5-15-M4-10-40	15	15	M4	8,5	10	4	81	3.75	22
433761	DVC.2-15-8,5-15-M4-10-55	15	15	M4	8,5	10	4	132	3.75	35
434061	DVC.2-15-8,5-15-M4-10-70	15	15	M4	8,5	10	4	180	3.75	48
433916	DVC.2-15-12-15-M4-10-40	15	15	M4	12	10	4	132	3.75	35
433766	DVC.2-15-12-15-M4-10-55	15	15	M4	12	10	4	142	3.75	38
434066	DVC.2-15-12-15-M4-10-70	15	15	M4	12	10	4	191	3.75	51
433923	DVC.2-20-14-15-M6-18-40	20	15	M6	14	18	6	191	3.75	51
433773	DVC.2-20-14-15-M6-18-55	20	15	M6	14	18	6	247	3.75	66
434073	DVC.2-20-14-15-M6-18-70	20	15	M6	14	18	6	319	3.75	85
433925	DVC.2-20-14-19-M6-18-40	20	19	M6	14	18	6	319	4.75	67
433775	DVC.2-20-14-19-M6-18-55	20	19	M6	14	18	6	226	4.75	48
434075	DVC.2-20-14-19-M6-18-70	20	19	M6	14	18	6	278	4.75	59
433927	DVC.2-20-14-20-M6-18-40	20	20	M6	14	18	6	278	5	56
433777	DVC.2-20-14-20-M6-18-55	20	20	M6	14	18	6	223	5	45
434077	DVC.2-20-14-20-M6-18-70	20	20	M6	14	18	6	270	5	54
433931	DVC.2-21-16-22-M6-18-40	21	22	M6	16	18	6	270	5.5	49
433781	DVC.2-21-16-22-M6-18-55	21	22	M6	16	18	6	240	5.5	44
434081	DVC.2-21-16-22-M6-18-70	21	22	M6	16	18	6	314	5.5	57
433921	DVC.2-20-12-30-M6-18-40	20	30	M6	12	18	6	240	7.5	32
433771	DVC.2-20-12-30-M6-18-55	20	30	M6	12	18	6	147	7.5	20
434071	DVC.2-20-12-30-M6-18-70	20	30	M6	12	18	6	227	7.5	30
433929	DVC.2-20-14-30-M6-18-40	20	30	M6	14	18	6	328	7.5	44
433779	DVC.2-20-14-30-M6-18-55	20	30	M6	14	18	6	556	7.5	74
434079	DVC.2-20-14-30-M6-18-70	20	30	M6	14	18	6	236	7.5	32
433941	DVC.2-25-18-20-M6-18-40	25	20	M6	18	18	6	593	5	119
433791	DVC.2-25-18-20-M6-18-55	25	20	M6	18	18	6	631	5	126
434091	DVC.2-25-18-20-M6-18-70	25	20	M6	18	18	6	1038	5	208
433946	DVC.2-25-20-20-M6-18-40	25	20	M6	20	18	6	1038	5	208
433796	DVC.2-25-20-20-M6-18-55	25	20	M6	20	18	6	655	5	131
434096	DVC.2-25-20-20-M6-18-70	25	20	M6	20	18	6	1055	5	211
433956	DVC.2-30-22-20-M8-20-40	30	20	M8	22	20	8	655	5	131
433806	DVC.2-30-22-20-M8-20-55	30	20	M8	22	20	8	863	5	173
434106	DVC.2-30-22-20-M8-20-70	30	20	M8	22	20	8	1272	5	254
433951	DVC.2-30-18-25-M8-20-40	30	25	M8	18	20	8	1272	6.25	203
433801	DVC.2-30-18-25-M8-20-55	30	25	M8	18	20	8	510	6.25	82
434101	DVC.2-30-18-25-M8-20-70	30	25	M8	18	20	8	785	6.25	126
433966	DVC.2-35-31-15-M8-20-40	35	15	M8	31	20	8	785	3.75	209
433816	DVC.2-35-31-15-M8-20-55	35	15	M8	31	20	8	1310	3.75	349
434116	DVC.2-35-31-15-M8-20-70	35	15	M8	31	20	8	2453	3.75	654



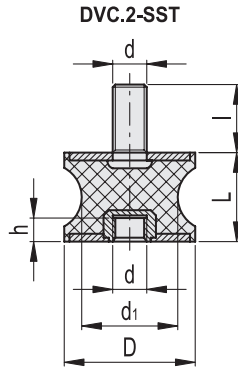
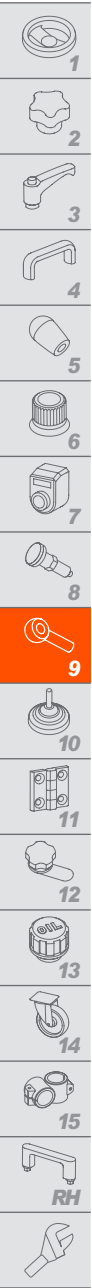
DVC.2 - 10 - 8 - 10 - M4 - 10 - 55  
 D d1 L d l Shore A

DVC.2

Code	Description	D	L	d	d1	l	h	Max load [N]	Max. deflection [mm]	Stiffness [N/mm]
433961	DVC.2-35-25-34-M8-20-40	35	34	M8	25	20	8	2453	8.5	289
433811	DVC.2-35-25-34-M8-20-55	35	34	M8	25	20	8	1255	8.5	148
434111	DVC.2-35-25-34-M8-20-70	35	34	M8	25	20	8	1830	8.5	215
433975	DVC.2-40-30-25-M8-23-40	40	25	M8	30	23	8	1830	6.25	293
433825	DVC.2-40-30-25-M8-23-55	40	25	M8	30	23	8	2133	6.25	341
434125	DVC.2-40-30-25-M8-23-70	40	25	M8	30	23	8	2843	6.25	455
433973	DVC.2-40-25-30-M8-23-40	40	30	M8	25	23	8	2843	7.5	379
433823	DVC.2-40-25-30-M8-23-55	40	30	M8	25	23	8	1096	7.5	146
434123	DVC.2-40-25-30-M8-23-70	40	30	M8	25	23	8	1897	7.5	253
433979	DVC.2-40-33-30-M8-23-40	40	30	M8	33	23	8	1897	7.5	253
433829	DVC.2-40-33-30-M8-23-55	40	30	M8	33	23	8	1178	7.5	157
434129	DVC.2-40-33-30-M8-23-70	40	30	M8	33	23	8	2191	7.5	292
433971	DVC.2-40-20-48-M8-23-40	40	48	M8	20	23	8	2191	12	183
433821	DVC.2-40-20-48-M8-23-55	40	48	M8	20	23	8	583	12	49
434121	DVC.2-40-20-48-M8-23-70	40	48	M8	20	23	8	825	12	69
433977	DVC.2-40-32-50-M8-23-40	40	50	M8	32	23	8	825	12.5	66
433827	DVC.2-40-32-50-M8-23-55	40	50	M8	32	23	8	610	12.5	49
434127	DVC.2-40-32-50-M8-23-70	40	50	M8	32	23	8	930	12.5	74
433981	DVC.2-50-42-30-M10-28-40	50	30	M10	42	28	10	2843	7.5	379
433831	DVC.2-50-42-30-M10-28-55	50	30	M10	42	28	10	1281	7.5	171
434131	DVC.2-50-42-30-M10-28-70	50	30	M10	42	28	10	1782	7.5	238
433986	DVC.2-55-44-45-M10-28-40	55	45	M10	44	28	10	1782	11.25	158
433836	DVC.2-55-44-45-M10-28-55	55	45	M10	44	28	10	1066	11.25	95
434136	DVC.2-55-44-45-M10-28-70	55	45	M10	44	28	10	1554	11.25	138
433991	DVC.2-57-25-45-M10-28-40	57	45	M10	25	28	10	1554	11.25	138
433841	DVC.2-57-25-45-M10-28-55	57	45	M10	25	28	10	1055	11.25	94
434141	DVC.2-57-25-45-M10-28-70	57	45	M10	25	28	10	1430	11.25	127
433996	DVC.2-60-49-60-M10-28-40	60	60	M10	49	28	10	1430	15	95
433846	DVC.2-60-49-60-M10-28-55	60	60	M10	49	28	10	2560	15	171
434146	DVC.2-60-49-60-M10-28-70	60	60	M10	49	28	10	4428	15	295
434001	DVC.2-70-45-53-M12-37-40	70	53	M12	45	37	12	4428	13.25	334
433851	DVC.2-70-45-53-M12-37-55	70	53	M12	45	37	12	2219	13.25	168
434151	DVC.2-70-45-53-M12-37-70	70	53	M12	45	37	12	2473	13.25	187
434006	DVC.2-72-64-33,5-M12-37-40	72	33,5	M12	64	37	12	2473	8.375	295
433856	DVC.2-72-64-33,5-M12-37-55	72	33,5	M12	64	37	12	3364	8.375	402
434156	DVC.2-72-64-33,5-M12-37-70	72	33,5	M12	64	37	12	4879	8.375	583
434011	DVC.2-75-60-40-M12-37-40	75	40	M12	60	37	12	4879	10	488
433861	DVC.2-75-60-40-M12-37-55	75	40	M12	60	37	12	2819	10	282
434161	DVC.2-75-60-40-M12-37-70	75	40	M12	60	37	12	4224	10	422
434016	DVC.2-95-80-75-M16-41-40	95	75	M16	80	41	16	4224	18.75	225
433866	DVC.2-95-80-75-M16-41-55	95	75	M16	80	41	16	8873	18.75	473
434166	DVC.2-95-80-75-M16-41-70	95	75	M16	80	41	16	12712	18.75	678



Machine elements



DVC.2 - 10 - 8 - 10 - SST - M4 - 10 - 55  
 D d1 L Stainless steel d l Shore A

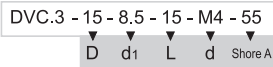
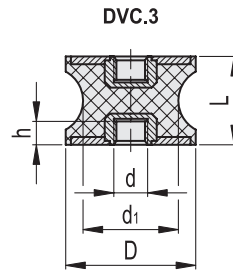
DVC.2-SST



Code	Description	D	L	d	d1	l	h	Max load [N]	Max. deflection [mm]	Stiffness [N/mm]
434201	DVC.2-10-8-10-SST-M4-10-55	10	10	M4	8	10	4	115	2.5	46
434211	DVC.2-15-8,5-15-SST-M4-10-55	15	15	M4	8,5	10	4	242	3.75	65
434216	DVC.2-15-12-15-SST-M4-10-55	15	15	M4	12	10	4	259	3.75	69
434223	DVC.2-20-14-15-SST-M6-18-55	20	15	M6	14	18	6	380	3.75	101
434225	DVC.2-20-14-19-SST-M6-18-55	20	19	M6	14	18	6	353	4.75	74
434227	DVC.2-20-14-20-SST-M6-18-55	20	20	M6	14	18	6	351	5	70
434231	DVC.2-21-16-22-SST-M6-18-55	21	22	M6	16	18	6	369	5.5	67
434221	DVC.2-20-12-30-SST-M6-18-55	20	30	M6	12	18	6	254	7.5	34
434229	DVC.2-20-14-30-SST-M6-18-55	20	30	M6	14	18	6	352	7.5	47
434241	DVC.2-25-18-20-SST-M6-18-55	25	20	M6	18	18	6	1558	5	312
434246	DVC.2-25-20-20-SST-M6-18-55	25	20	M6	20	18	6	1615	5	323
434256	DVC.2-30-22-20-SST-M8-20-55	30	20	M8	22	20	8	2346	5	469
434251	DVC.2-30-18-25-SST-M8-20-55	30	25	M8	18	20	8	1570	6.25	251
434266	DVC.2-35-31-15-SST-M8-20-55	35	15	M8	31	20	8	3762	3.75	1003
434261	DVC.2-35-25-34-SST-M8-20-55	35	34	M8	25	20	8	2826	8.5	332
434275	DVC.2-40-30-25-SST-M8-23-55	40	25	M8	30	23	8	3952	6.25	632
434273	DVC.2-40-25-30-SST-M8-23-55	40	30	M8	25	23	8	2628	7.5	350
434279	DVC.2-40-33-30-SST-M8-23-55	40	30	M8	33	23	8	2835	7.5	378
434271	DVC.2-40-20-48-SST-M8-23-55	40	48	M8	20	23	8	1314	12	109
434277	DVC.2-40-32-50-SST-M8-23-55	40	50	M8	32	23	8	1546	12.5	124
434281	DVC.2-50-42-30-SST-M10-28-55	50	30	M10	42	28	10	2657	7.5	354
434286	DVC.2-55-44-45-SST-M10-28-55	55	45	M10	44	28	10	2310	11.25	205
434291	DVC.2-57-25-45-SST-M10-28-55	57	45	M10	25	28	10	2065	11.25	184
434296	DVC.2-60-49-60-SST-M10-28-55	60	60	M10	49	28	10	5060	15	337
434301	DVC.2-70-45-53-SST-M12-37-55	70	53	M12	45	37	12	3777	13.25	285
434306	DVC.2-72-64-33,5-SST-M12-37-55	72	33,5	M12	64	37	12	8559	8.375	1022
434311	DVC.2-75-60-40-SST-M12-37-55	75	40	M12	60	37	12	8176	10	818
434316	DVC.2-95-80-75-SST-M16-41-55	95	75	M16	80	41	16	15518	18.75	828

Machine elements

14



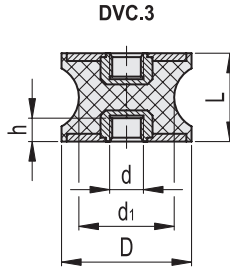
DVC.3

Code	Description	D	L	d	d1	h	Max load [N]	Max. deflection [mm]	Stiffness [N/mm]
434601	DVC.3-15-8,5-15-M4-40	15	15	M4	8,5	4	94	3.75	25
434501	DVC.3-15-8,5-15-M4-55	15	15	M4	8,5	4	155	3.75	41
434701	DVC.3-15-8,5-15-M4-70	15	15	M4	8,5	4	211	3.75	56
434606	DVC.3-15-12-15-M4-40	15	15	M4	12	4	155	3.75	41
434506	DVC.3-15-12-15-M4-55	15	15	M4	12	4	166	3.75	44
434706	DVC.3-15-12-15-M4-70	15	15	M4	12	4	223	3.75	60
434613	DVC.3-20-14-15-M6-40	20	15	M6	14	6	223	3.75	60
434513	DVC.3-20-14-15-M6-55	20	15	M6	14	6	289	3.75	77
434713	DVC.3-20-14-15-M6-70	20	15	M6	14	6	374	3.75	100
434615	DVC.3-20-14-19-M6-40	20	19	M6	14	6	374	4.75	79
434515	DVC.3-20-14-19-M6-55	20	19	M6	14	6	264	4.75	56
434715	DVC.3-20-14-19-M6-70	20	19	M6	14	6	326	4.75	69
434617	DVC.3-20-14-20-M6-40	20	20	M6	14	6	326	5	65
434517	DVC.3-20-14-20-M6-55	20	20	M6	14	6	261	5	52
434717	DVC.3-20-14-20-M6-70	20	20	M6	14	6	316	5	63
434621	DVC.3-21-16-22-M6-40	21	22	M6	16	6	316	5.5	57
434521	DVC.3-21-16-22-M6-55	21	22	M6	16	6	281	5.5	51
434721	DVC.3-21-16-22-M6-70	21	22	M6	16	6	367	5.5	67
434611	DVC.3-20-12-30-M6-40	20	30	M6	12	6	281	7.5	37
434511	DVC.3-20-12-30-M6-55	20	30	M6	12	6	172	7.5	23
434711	DVC.3-20-12-30-M6-70	20	30	M6	12	6	266	7.5	35
434619	DVC.3-20-14-30-M6-40	20	30	M6	14	6	383	7.5	51
434519	DVC.3-20-14-30-M6-55	20	30	M6	14	6	650	7.5	87
434719	DVC.3-20-14-30-M6-70	20	30	M6	14	6	277	7.5	37
434631	DVC.3-25-18-20-M6-40	25	20	M6	18	6	694	5	139
434531	DVC.3-25-18-20-M6-55	25	20	M6	18	6	738	5	148
434731	DVC.3-25-18-20-M6-70	25	20	M6	18	6	1214	5	243
434636	DVC.3-25-20-20-M6-40	25	20	M6	20	6	1214	5	243
434536	DVC.3-25-20-20-M6-55	25	20	M6	20	6	767	5	153
434736	DVC.3-25-20-20-M6-70	25	20	M6	20	6	1235	5	247
434643	DVC.3-30-22-20-M8-40	30	20	M8	22	8	767	5	153
434543	DVC.3-30-22-20-M8-55	30	20	M8	22	8	1010	5	202
434743	DVC.3-30-22-20-M8-70	30	20	M8	22	8	1488	5	298
434641	DVC.3-30-18-25-M8-40	30	25	M8	18	8	1488	6.25	238
434541	DVC.3-30-18-25-M8-55	30	25	M8	18	8	597	6.25	95
434741	DVC.3-30-18-25-M8-70	30	25	M8	18	8	919	6.25	147
434645	DVC.3-35-25-34-M8-40	35	34	M8	25	8	2871	8.5	338
434545	DVC.3-35-25-34-M8-55	35	34	M8	25	8	1469	8.5	173
434745	DVC.3-35-25-34-M8-70	35	34	M8	25	8	2141	8.5	252



Machine elements





DVC.3 - 15 - 8.5 - 15 - M4 - 55  
 D d1 L d Shore A

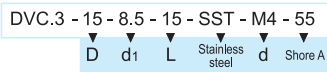
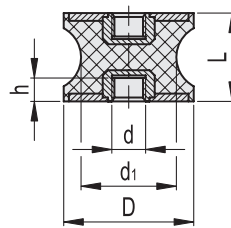
DVC.3

Code	Description	D	L	d	d1	h	Max load [N]	Max. deflection [mm]	Stiffness [N/mm]
434655	DVC.3-40-30-25-M8-40	40	25	M8	30	8	2141	6.25	343
434555	DVC.3-40-30-25-M8-55	40	25	M8	30	8	2496	6.25	399
434755	DVC.3-40-30-25-M8-70	40	25	M8	30	8	3326	6.25	532
434653	DVC.3-40-25-30-M8-40	40	30	M8	25	8	3326	7.5	444
434553	DVC.3-40-25-30-M8-55	40	30	M8	25	8	1283	7.5	171
434753	DVC.3-40-25-30-M8-70	40	30	M8	25	8	2219	7.5	296
434659	DVC.3-40-33-30-M8-40	40	30	M8	33	8	2219	7.5	296
434559	DVC.3-40-33-30-M8-55	40	30	M8	33	8	1378	7.5	184
434759	DVC.3-40-33-30-M8-70	40	30	M8	33	8	2564	7.5	342
434657	DVC.3-40-32-50-M8-40	40	50	M8	32	8	2564	12.5	205
434557	DVC.3-40-32-50-M8-55	40	50	M8	32	8	682	12.5	55
434757	DVC.3-40-32-50-M8-70	40	50	M8	32	8	965	12.5	77
434651	DVC.3-40-20-48-M8-40	40	48	M8	20	8	965	12	80
434551	DVC.3-40-20-48-M8-55	40	48	M8	20	8	713	12	59
434751	DVC.3-40-20-48-M8-70	40	48	M8	20	8	1088	12	91
434656	DVC.3-50-42-30-M10-40	50	30	M10	42	10	3326	7.5	444
434556	DVC.3-50-42-30-M10-55	50	30	M10	42	10	1499	7.5	200
434756	DVC.3-50-42-30-M10-70	50	30	M10	42	10	2085	7.5	278
434661	DVC.3-55-44-45-M10-40	55	45	M10	44	10	2085	11.25	185
434561	DVC.3-55-44-45-M10-55	55	45	M10	44	10	1247	11.25	111
434761	DVC.3-55-44-45-M10-70	55	45	M10	44	10	1818	11.25	162
434666	DVC.3-57-25-45-M10-40	57	45	M10	25	10	1818	11.25	162
434566	DVC.3-57-25-45-M10-55	57	45	M10	25	10	1235	11.25	110
434766	DVC.3-57-25-45-M10-70	57	45	M10	25	10	1673	11.25	149
434671	DVC.3-60-49-60-M10-40	60	60	M10	49	10	1673	15	112
434571	DVC.3-60-49-60-M10-55	60	60	M10	49	10	2995	15	200
434771	DVC.3-60-49-60-M10-70	60	60	M10	49	10	5181	15	345
434676	DVC.3-70-45-53-M12-40	70	53	M12	45	12	5181	13.25	391
434576	DVC.3-70-45-53-M12-55	70	53	M12	45	12	2597	13.25	196
434776	DVC.3-70-45-53-M12-70	70	53	M12	45	12	2894	13.25	218
434681	DVC.3-72-64-33,5-M12-40	72	33,5	M12	64	12	2894	8.375	346
434581	DVC.3-72-64-33,5-M12-55	72	33,5	M12	64	12	3936	8.375	470
434781	DVC.3-72-64-33,5-M12-70	72	33,5	M12	64	12	5708	8.375	682
434686	DVC.3-75-60-40-M12-40	75	40	M12	60	12	5708	10	571
434586	DVC.3-75-60-40-M12-55	75	40	M12	60	12	3298	10	330
434786	DVC.3-75-60-40-M12-70	75	40	M12	60	12	4942	10	494
434691	DVC.3-95-80-75-M16-40	95	75	M16	80	16	4942	18.75	264
434591	DVC.3-95-80-75-M16-55	95	75	M16	80	16	10382	18.75	554
434791	DVC.3-95-80-75-M16-70	95	75	M16	80	16	14873	18.75	793



Machine elements

DVC.3-SST



DVC.3-SST



Code	Description	D	L	d	d1	h	Max load [N]	Max. deflection [mm]	Stiffness [N/mm]
434801	DVC.3-15-8,5-15-SST-M4-55	15	15	M4	8,5	4	283	3.75	76
434806	DVC.3-15-12-15-SST-M4-55	15	15	M4	12	4	303	3.75	81
434813	DVC.3-20-14-15-SST-M6-55	20	15	M6	14	6	445	3.75	119
434815	DVC.3-20-14-19-SST-M6-55	20	19	M6	14	6	413	4.75	87
434817	DVC.3-20-14-20-SST-M6-55	20	20	M6	14	6	411	5	82
434821	DVC.3-21-16-22-SST-M6-55	21	22	M6	16	6	431	5.5	78
434811	DVC.3-20-12-30-SST-M6-55	20	30	M6	12	6	297	7.5	40
434819	DVC.3-20-14-30-SST-M6-55	20	30	M6	14	6	412	7.5	55
434831	DVC.3-25-18-20-SST-M6-55	25	20	M6	18	6	1823	5	365
434836	DVC.3-25-20-20-SST-M6-55	25	20	M6	20	6	1889	5	378
434843	DVC.3-30-22-20-SST-M8-55	30	20	M8	22	8	2745	5	549
434841	DVC.3-30-18-25-SST-M8-55	30	25	M8	18	8	1837	6.25	294
434845	DVC.3-35-25-34-SST-M8-55	35	34	M8	25	8	3306	8.5	389
434855	DVC.3-40-30-25-SST-M8-55	40	25	M8	30	8	4624	6.25	740
434853	DVC.3-40-25-30-SST-M8-55	40	30	M8	25	8	3075	7.5	410
434859	DVC.3-40-33-30-SST-M8-55	40	30	M8	33	8	3317	7.5	442
434857	DVC.3-40-32-50-SST-M8-55	40	50	M8	32	8	1537	12.5	123
434851	DVC.3-40-20-48-SST-M8-55	40	48	M8	20	8	1808	12	151
434856	DVC.3-50-42-30-SST-M10-55	50	30	M10	42	10	3109	7.5	415
434861	DVC.3-55-44-45-SST-M10-55	55	45	M10	44	10	2702	11.25	240
434866	DVC.3-57-25-45-SST-M10-55	57	45	M10	25	10	2416	11.25	215
434871	DVC.3-60-49-60-SST-M10-55	60	60	M10	49	10	5920	15	395
434876	DVC.3-70-45-53-SST-M12-55	70	53	M12	45	12	4419	13.25	333
434881	DVC.3-72-64-33,5-SST-M12-55	72	33,5	M12	64	12	10014	8.375	1196
434886	DVC.3-75-60-40-SST-M12-55	75	40	M12	60	12	9566	10	957
434891	DVC.3-95-80-75-SST-M16-55	95	75	M16	80	16	18156	18.75	968