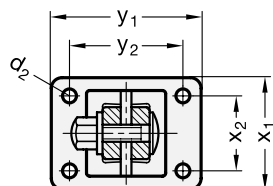
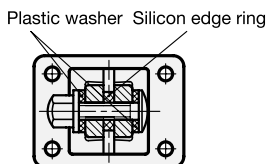


ROSTFREI
Inox
Stainless
Steel

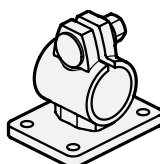
GN 146.5: with 4 mounting holes



Type A
without sealing



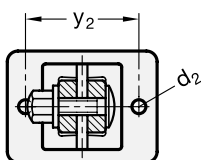
Type B
with sealing



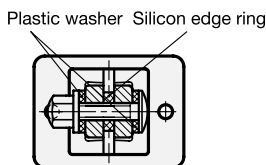
4 Type

- A without sealing
- B with sealing

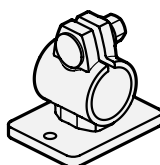
GN 146.6: with 2 mounting holes



Type A
without sealing



Type B
with sealing



1

2

d ₁ Bore B	k Clamping length	d ₂	d ₃ Clamping thread	d ₄	Length l	m	t	x ₁	x ₂	y ₁	y ₂
B 30	40	6,5	M 8	37	65	30	7	52	35	71	53

Specification

- Stainless Steel
 - AISI CF-8
 - matt shot-blasted
- Clamping bores mechanically machined
- Carriage bolt DIN 603 Stainless Steel A2
- Cap nuts DIN 917 Stainless Steel A2
- Sealings
 - Washers
Plastic (Polyacetal POM)
 - Edge ring
Silicon, 40 ... 60 Shore A
- *Stainless Steel characteristics* → Page 334
- RoHS compliant

Information

The clamping bores of the Stainless Steel-Flanged connector clamps GN 146.5 / GN 146.6 are mechanically machined and designed for construction tubings GN 990 or DIN 2391, DIN 2395 and DIN 2462 respectively.

The shape of the clamping screws / nuts prevents the formation of wetness due to dammed-up water. The designs with sealing (Type B) also seals bore holes and threads.

see also...

- *Stainless Steel-Construction tubes GN 990*
→ Main Catalogue Page 1027
- *Stainless Steel-Flanged connector clamps GN 145* → Page 287

Stainless Steel-Flanged connector clamp	1	d ₁
GN 146.5-B30-40-B	2	k
	3	Type

Stainless Steel-Flanged connector clamp	1	d ₁
GN 146.6-B30-40-A	2	k
	3	Type