

1 Type

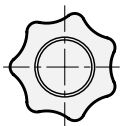
- Operation
- SG** with star knob
 - ST** with wrench
 - SK** with T-Handle
 - RG** with knurled knob (GN 7336)
 - KG** with wrench
 - HG** with lever

3 Version of the hook

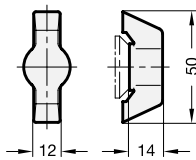
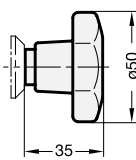
- H1** Pivot radius R=28

5 Identification no.

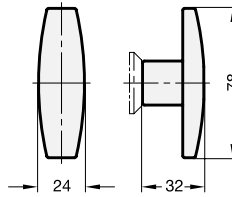
- 1** without latch bracket
- 2** with latch bracket



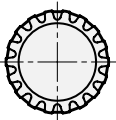
Type **SG**



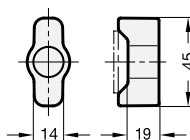
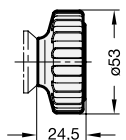
Type **SK**



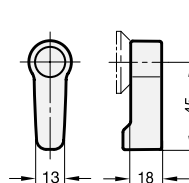
Type **ST**



Type **RG**



Type **KG**



Type **HG**

2

Hook distance A	d Type SG, RG, KG, HG	Type SK, ST	h Type SG, RG, KG, HG	Type SK, ST
18	28	32	4	6

1) Dimensions of the latch bracket → Page 243

Specification

- Lock housing
Zinc die casting
- Locating ring
 - chrome plated **CR**
 - plastic coated black, RAL 9005, textured finish **SW**
- All other parts
Steel zinc plated, blue passivated
- Operating handles
Plastic (Polyamide PA)
black, matt
- Cover cap (type RG, KG, HG)
light grey
- **RoHS compliant**

On request

- Hook-type latches with other hook distance A
- Hook with other pivoting radius R

4

Information

Hook-type latches GN 115.8 with hook and latch bracket are mainly used for sliding doors and flaps. The locking action is in radial direction to the axis of rotation, resulting in a wide variety of different uses.

Hook-type latches GN 115.8 are supplied with the hook enclosed loose.

Further construction and assembly instructions → Page 243.

see also...

- *Hook-type latches GN 115.8 (Operation with key) → Page 241*

How to order

1	Type
2	Latch distance A
3	Version of the hook
4	Finish of the locating ring
5	Identification no.

GN 115.8-HG-18-H1-SW-2