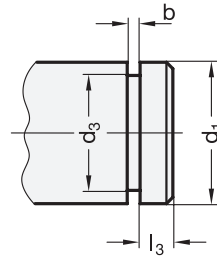
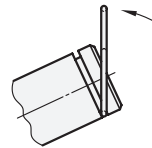


Cut-in for the retaining ring



ROSTFREI  
Inox  
Stainless  
Steel

The retaining rings are to be mounted in radial direction as shown in the drawing



$d_1$	$d_2$	$d_3 -0,1$	$b +0,2$	$l_1$	$l_2$	$l_3 +0,3$
12	1,4	9,1	1,7	16	5,6	2,5
14	1,5	10,9	1,8	17	6	3,2
15	1,5	11,9	1,8	17	6	3,2
16	1,5	12,9	1,8	17	6	3,2
17	1,6	13,7	1,9	19	6,4	3,9
18	1,6	14,7	1,9	19	6,4	3,9
19	1,6	15,7	1,9	19	6,4	3,9
20	1,6	16,7	1,9	19	6,4	3,9
21	1,7	17,5	2	20	6,8	5,1
22	1,7	18,5	2	20	6,8	5,1
23	1,7	19,5	2	20	6,8	5,1
24	1,7	20,5	2	20	6,8	5,1
26	1,8	22,3	2,1	21	7,2	5,4

**Specification**

- Stainless Steel  
AISI 301
- *Stainless Steel characteristics* → Page 334
- **RoHS compliant**

**Information**

Retaining rings GN 111.6 are normally used together with ball chains or retaining cables.

One typical application involves making star knobs captive, for instance. Star knobs with mounted retaining ring and different retaining cables are available under GN 6336.13.

Ball chains and retaining cables to be ordered separately.

see also...

- *Retaining cables GN 111.2* → Main catalogue Page 478
- *Stainless Steel-Ball chains GN 111.5* → Main catalogue Page 477
- *Ball chains GN 111 (Steel)* → Main catalogue Page 477
- *Spiral retaining cables GN 111.4* → Main catalogue Page 479

How to order

**GN 111.6-12**

1  $d_1$