

# VC.792-XX

ELESA original design

## Lobe knobs for position indicators



### Material

Glass-fibre reinforced polyamide based (PA) technopolymer. Resistant to solvents, oils, greases and other chemical agents.

### Colour

Black, matte finish.

### Standard executions

Black-oxide steel boss, H7 reamed hole, fitting to shaft by means of a supplied grub screw with hexagon socket and cup end UNI 5929-85.

- **VC.792-GXX**: for gravity indicators.

- **VC.792-PXX**: for positive drive indicators.

Rear flange with internal crown gear wheel in acetal resin based (POM) technopolymer. Black-oxide steel screw and anchor pin.

### Accessories on request

Cover CP-XX for use without the indicator.

### Features and applications

The ergonomic design enables an effective grip. The lobed shape with no cavities prevents unhealthy residues from depositing and guarantees perfect cleaning.

Particularly suitable for applications on machines and equipment whose parts must be frequently cleaned by using water jets or steam.

### Order information for indicator (to be ordered separately)

To choose the indicator see the table below for possible assembly with indicators. See also "Assembly instructions" for gravity indicators type G or positive drive indicators type P.

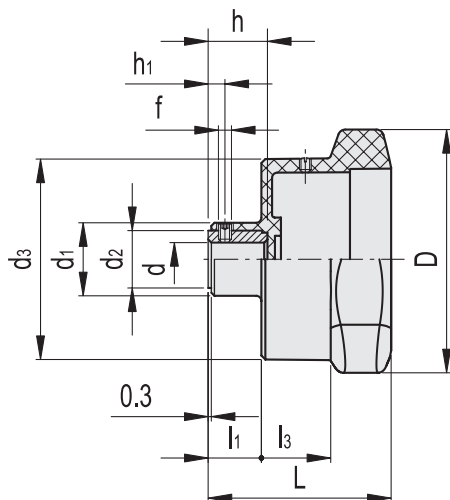
### Special executions on request

Knob with stainless steel boss.

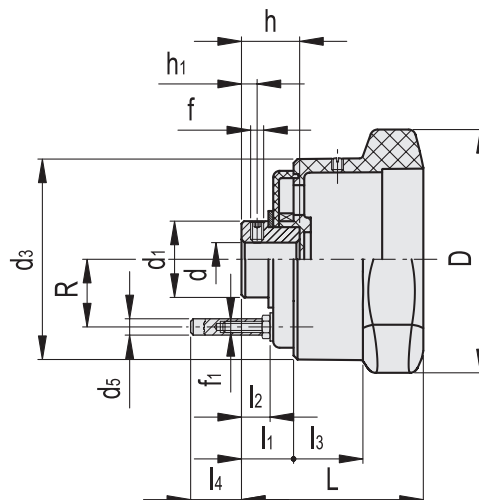


Application example with indicator

VC.792-GXX



VC.792-PXX



### VC.792-GXX

Code	Description	D	L	d <sub>H7</sub>	h	d <sub>1</sub>	d <sub>2</sub>	d <sub>3</sub>	f	h <sub>1</sub>	l <sub>1</sub>	l <sub>3</sub>	⚖	Handwheel/indicator combinations
CE.30071	VC.792/72-GXX1 A-10	72	52	10	17	24	18	56	M5	6	15.9	19	79	GA01 - GA11
CE.30081	VC.792/98-GXX2 A-12	98	58	12	22	27.5	22	76.5	M5	6	20.5	19	147	GA02 - GA12 - GW12

### VC.792-PXX

Code	Description	D	L	d <sub>H7</sub>	h	d <sub>1</sub>	d <sub>3</sub>	d <sub>5</sub>	f	f <sub>1</sub>	h <sub>1</sub>	l <sub>1</sub>	l <sub>2</sub>	l <sub>3</sub>	l <sub>4</sub>	R	⚖	Handwheel/indicator combinations	
CE.30073	VC.792/72-PXX1 A-10	72	55	10	20.5	18	56	6	M5	M4	5	18.5	10.5	19	14.5	19	85		PA01 - PA11
CE.30083	VC.792/98-PXX2 A-12	98	58	12	22	30	76.5	6	M5	M4	6	20	12	19	13.1	28.5	207		PA02 - PA12 - PW12