

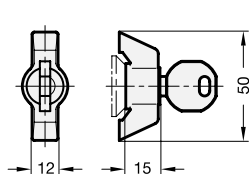
Type **SC/SU**



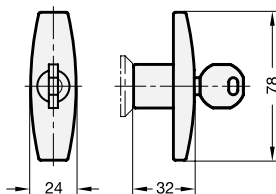
1 Type

Operation

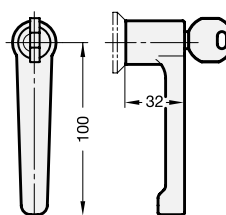
- SC** with key (same lock)
- SU** with key (different lock)
- SCK** with wrench (same lock)
- SUK** with wrench (different lock)
- SCT** with T-Handle (different lock)
- SUT** with T-Handle (different lock)
- LCG** with hand lever (only in SW) (same lock)
- LUG** with hand lever (only in SW) (different lock)



Type **SCK/SUK**



Type **SCT/SUT**



Type **LCG/LUG**

2

Latch distance A											d			h		
											Type SC, SU	Type SCK, SUK, SCT, SUT, LCG, LUG	Type SC, SU	Type SCK, SUK, SCT, SUT, LCG, LUG		
4	8	13	16	20	24	28	32	36	40	45	28	32	4	6		
6	10	14	18	22	26	30	34	38	42	50	28	32	4	6		

Specification

- Lock housing
Zinc die casting
- Locating ring
 - chrome plated (standard)
 - plastic coated
black, RAL 9005, textured finish ● **SW**
- All other parts
Steel zinc plated, blue passivated
- Key
Nickel silver with plastic hand piece
- Wrench / T-Handle
Plastic (Polyamide PA)
- black, matt
- *Plastic characteristics* → Page 331
- **RoHS compliant**

Information

The lockable latches GN 115 lock by a turning operation limited to 90° which moves the locking behind the door frame. The bevels of the locking ease the closing of the door.

Latches with 22 different cranks cover a range A from 4 to 50 mm.

Two keys are supplied. The key may be pulled off in both end positions.

Latches GN 115 are supplied with loosely enclosed locking.

see also...

- *Latches GN 115 (not lockable)* → Page 240
- *Mini-Latches GN 115.1* → Main Catalogue Page 864
- *Sheet metal punches GN 123* → Main Catalogue Page 876

Latch, chrome plated locating ring

GN 115-SC-42

- | | |
|---|------------------|
| 1 | Type |
| 2 | Latch distance A |

Latch, black locating ring

GN 115-SU-18-SW

- | | |
|---|------------------|
| 1 | Type |
| 2 | Latch distance A |
| 3 | Finish |



Construction and assembly instructions

For installation, set a bore diameter in the door as shown in the outline drawing opposite

Once assembled, the latch is pushed through the bore diameter from the front. The hexagon nut can then be pushed over the latch from the back and bolted in place.

The **installation bore diameter** in the door leaf is usually generated by punching or laser machining in series production.

For small series and steel sheets below 2 mm thickness, the sheet metal punches GN 123 are the tool of choice → *Main Catalogue Page 876*

The installation bore diameter can also be set by drilling / milling as shown in the outline drawings opposite.

