

CS-RPR.

Reprogrammable lock latches



• Lock

With opposing blades and double track key with internal profile, not supplied. 9.791 different combinations.

• Stator and rotor

Zinc-plated steel, thickness 2.5 mm.

• Nut

M19x1 in brass.

• Rotation

180°, with key removable in two positions.

• Closing lever

Zinc-plated steel, thickness 2.5 mm.

• Nut

Brass.

• Screw

For stator in zinc-plated steel, for screw in steel.

• Rotation

180°, with key removable in two positions.

• Keys kit (to be ordered separately)

The KCR keys kit, not included in the supply, consists of a brass programming key and some nickel silver normal use keys.

- **KCR-05**: 1 programming key and 5 normal use keys.

- **KCR-10**: 1 programming key and 10 normal use keys.

- **KCR-01**: 25 normal use keys.

Special executions and accessories

- Closing levers in other dimensions.

Other programming keys kits.

Features and applications

Reprogrammable lock latches CS-RPR are supplied non-programmed with the rotor positioned in line with the index marked on the stator front surface.

First programming: insert the programming brass key and turn the lock clockwise by 45° (Fig.1). The lock is now programmed. Insert the normal use key in nickel silver to lock or unlock the latch (Fig.2).

Reprogramming of the lock: insert the first brass programming key and turn the lock anticlockwise by 45° until the rotor is in the neutral position (Fig.3). Remove the key, insert now the new programming key (new kit) and turn it clockwise by 45° (Fig.1).

Now the lock has been reprogrammed with a new combination and the nickel silver normal use keys, included in the kit of the new programming key, must be used to lock or unlock the latch (Fig.2).



Fig. 1



Fig. 2

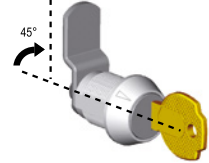
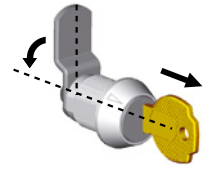
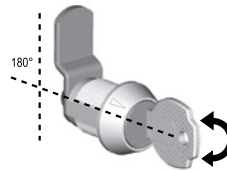
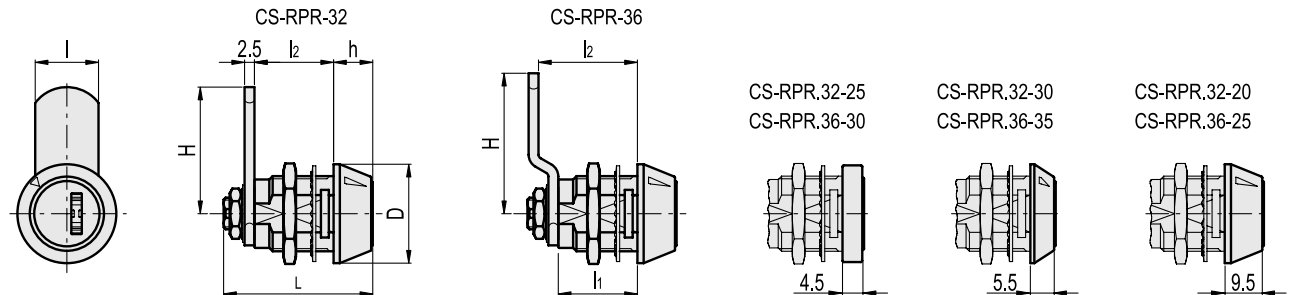
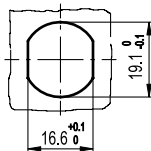


Fig. 3



Drilling template



Code	Description	D	H	L	l	l ₁	l ₂	h	⚖️
421555	CS-RPR.32-20	25	32	37.5	16	20	20	9.5	65
421557	CS-RPR.32-25	22	32	37.5	16	25	25	4.5	70
421559	CS-RPR.32-30	25	32	40.5	16	30	30	5.5	85
421575	CS-RPR.36-25	25	35.5	37.5	16	20	25	9.5	70
421577	CS-RPR.36-30	22	35.5	37.5	16	25	30	4.5	75
421579	CS-RPR.36-35	25	35.5	40.5	16	30	35	5.5	90