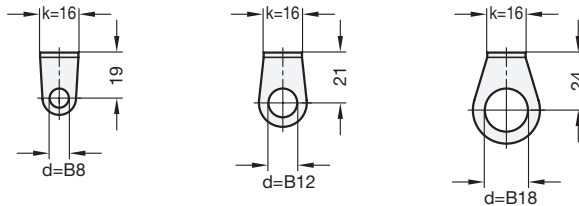
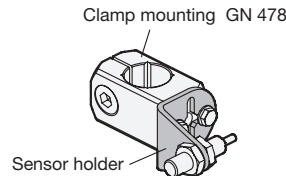
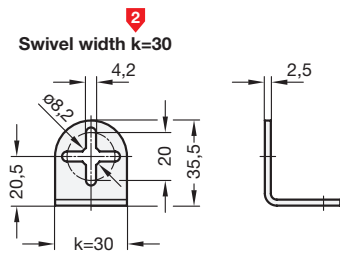


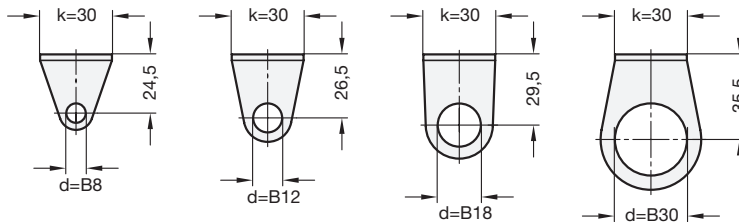
Front views for different bore- \varnothing d



ROSTFREI
Inox
Stainless
Steel



Front views for different bore- \varnothing d



Specification

- Stainless Steel AISI 303
matt shot-blasted
- *Stainless Steel characteristics* → Page 1144
- **RoHS-compliant**

Information

The sensor holders GN 479 are designed for holding sensors attached with two lock nuts.

The attachment bore matches the central thread of clamp mountings GN 478. For $k=30$, the cross-shaped slotted holes provide extra adjustability and allow the use of two fixing screws.

Fixing screws have to be ordered separately.

see also...

- *Clamp mountings (with threaded holes) GN 478* → Page 1081
- *Retaining plates GN 479.1 (without bore d)* → Page 1083
- *More fixing elements for sensors:*
GN 271.4 / GN 272.4 / GN 273.4 → Page 1024 - 1026

How to order

GN 479-B12-16

1 d

2 k