

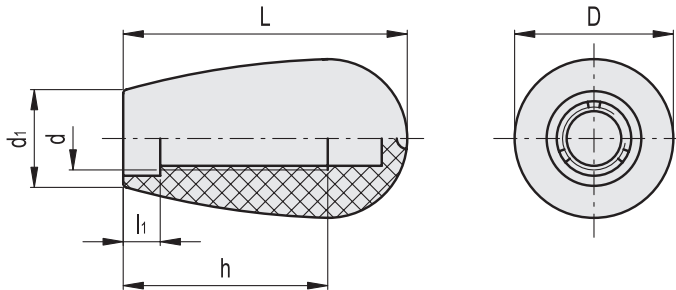
I.622

ELESA original design

Handles



- **Material**
Polyamide based (PA) technopolymer. Resistant to solvents, oils, greases and other chemical agents.
 - **Colour**
Six standard colours: black, orange, grey, yellow, light-blue, red. Glossy finish.
 - **Standard execution**
Threaded blind hole.
- Special executions on request**
Different RAL colours.



Code	Description	D	L	d	d ₁	h	l ₁	⚖
120911	I.622/25-M6-C9	16	25	M6	12	16	3.5	4
120912	I.622/25-M6-C2	16	25	M6	12	16	3.5	4
120913	I.622/25-M6-C3	16	25	M6	12	16	3.5	4
120914	I.622/25-M6-C4	16	25	M6	12	16	3.5	4
120915	I.622/25-M6-C5	16	25	M6	12	16	3.5	4
120916	I.622/25-M6-C6	16	25	M6	12	16	3.5	4
120951	I.622/30-M8-C9	20	32	M8	14	20	3.5	7
120952	I.622/30-M8-C2	20	32	M8	14	20	3.5	7
120953	I.622/30-M8-C3	20	32	M8	14	20	3.5	7
120954	I.622/30-M8-C4	20	32	M8	14	20	3.5	7
120955	I.622/30-M8-C5	20	32	M8	14	20	3.5	7
120956	I.622/30-M8-C6	20	32	M8	14	20	3.5	7
120991	I.622/40-M8-C9	26	42	M8	17	30	5	18
120992	I.622/40-M8-C2	26	42	M8	17	30	5	18
120993	I.622/40-M8-C3	26	42	M8	17	30	5	18
120994	I.622/40-M8-C4	26	42	M8	17	30	5	18
120995	I.622/40-M8-C5	26	42	M8	17	30	5	18
120996	I.622/40-M8-C6	26	42	M8	17	30	5	18
121001	I.622/40-M10-C9	26	42	M10	17	30	5	16
121002	I.622/40-M10-C2	26	42	M10	17	30	5	16
121003	I.622/40-M10-C3	26	42	M10	17	30	5	16
121004	I.622/40-M10-C4	26	42	M10	17	30	5	16
121005	I.622/40-M10-C5	26	42	M10	17	30	5	16
121006	I.622/40-M10-C6	26	42	M10	17	30	5	16
121061	I.622/55-M10-C9	34	54.5	M10	21	35	8	34
121062	I.622/55-M10-C2	34	54.5	M10	21	35	8	34
121063	I.622/55-M10-C3	34	54.5	M10	21	35	8	34
121064	I.622/55-M10-C4	34	54.5	M10	21	35	8	34
121065	I.622/55-M10-C5	34	54.5	M10	21	35	8	34
121066	I.622/55-M10-C6	34	54.5	M10	21	35	8	34
121071	I.622/55-M12-C9	34	54.5	M12	21	35	8	32
121072	I.622/55-M12-C2	34	54.5	M12	21	35	8	32
121073	I.622/55-M12-C3	34	54.5	M12	21	35	8	32
121074	I.622/55-M12-C4	34	54.5	M12	21	35	8	32
121075	I.622/55-M12-C5	34	54.5	M12	21	35	8	32
121076	I.622/55-M12-C6	34	54.5	M12	21	35	8	32