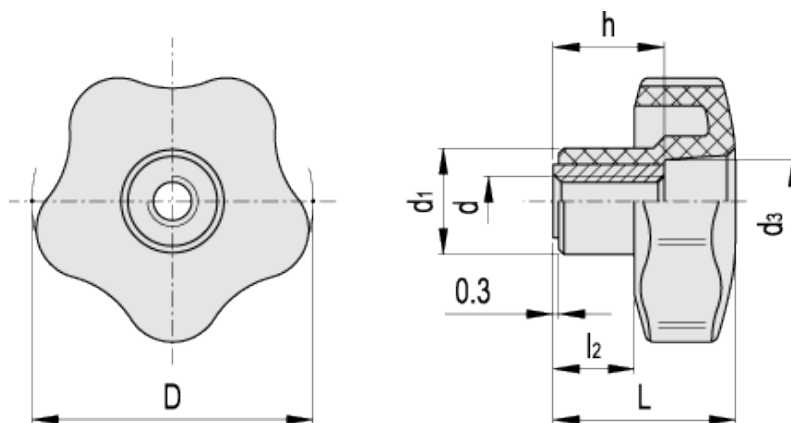


VCT.FP

Lobe knobs



ELESA Original design



technical informations

Material

High resilience polypropylene based (PP) technopolymer. Resistant to solvents, oils, greases and other chemical agents.

Colour

Black, matte finish.

Standard execution

Brass boss, threaded through hole.







Accessories on request

Coloured centre caps (see centre caps table).

Ergonomy and design

The particular design of this knob follows rigorous ergonomic standards: five-lobe shape, blended radius, well proportioned rim height offer a natural, safe and comfortable grip, allowing the operator to obtain a strong clamping action.

Standard Elements		Main dimensions					Mounting hole		Weight
Code	Description	D	L	d ₁	d ₃	l ₂	d _{6H}	h	g
69847	VCT.32 FP-M5	32	23	15	10	10	M5	12	11
69848	VCT.32 FP-M6	32	23	15	10	10	M6	12	10
69849	VCT.32 FP-M8	32	23	15	10	10	M8	12	9
69897	VCT.40 FP-M6	40	27	17	12	12	M6	18	26
69898	VCT.40 FP-M8	40	27	17	12	12	M8	18	24
69899	VCT.40 FP-M10	40	27	17	12	12	M10	17	23
69956	VCT.50 FP-M8	50	32	19	15	14	M8	20	38
69957	VCT.50 FP-M10	50	32	19	15	14	M10	20	34
69958	VCT.50 FP-M12	50	32	19	15	14	M12	20	30
70016	VCT.63 FP-M8	63	37	22	19	16	M8	26	44
70017	VCT.63 FP-M10	63	37	22	19	16	M10	26	42
70018	VCT.63 FP-M12	63	37	22	19	16	M12	26	40
70067	VCT.74 FP-M12	74	43.5	26	17	22	M12	26	56
70068	VCT.74 FP-M14	74	43.5	26	17	22	M14	26	52
70069	VCT.74 FP-M16	74	43.5	26	17	22	M16	31	54

-  RAL 9005
-  RAL 3000
-  RAL 2004
-  RAL 7035
-  RAL 1021
-  RAL 5024

CENTRE CAPS

VCT.32		VCT.40		VCT.50		VCT.63 - VCT.74 - VCT.95	
Code	Description	Code	Description	Code	Description	Code	Description
6900	CA.VCT.32 NR	6910	CA.VCT.40 NR	6920	CA.VCT.50 NR	6930	CA.VCT.63-74-95 NR
6901	CA.VCT.32 RS	6911	CA.VCT.40 RS	6921	CA.VCT.50 RS	6931	CA.VCT.63-74-95 RS
6903	CA.VCT.32 AR	6913	CA.VCT.40 AR	6923	CA.VCT.50 AR	6933	CA.VCT.63-74-95 AR
6904	CA.VCT.32 GR	6914	CA.VCT.40 GR	6924	CA.VCT.50 GR	6934	CA.VCT.63-74-95 GR
6905	CA.VCT.32 GI	6915	CA.VCT.40 GI	6925	CA.VCT.50 GI	6935	CA.VCT.63-74-95 GI
6906	CA.VCT.32 AZ	6916	CA.VCT.40 AZ	6926	CA.VCT.50 AZ	6936	CA.VCT.63-74-95 AZ



ELESA and GANTER models all rights reserved in accordance with the law. Always mention the source when reproducing our drawings.

STANDARD MACHINE ELEMENTS WORLDWIDE