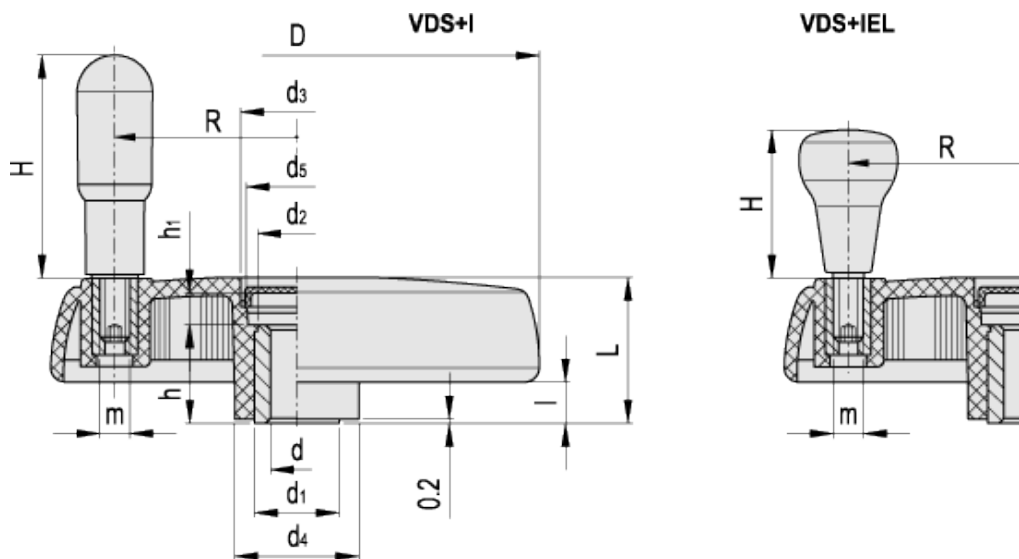


# VDS+I



Solid handwheels with revolving handle



## technical informations

### Material

High-resilience polypropylene based (PP) technopolymer. Resistant to solvents, oils, greases and other chemical agents.

### Colour

Black, matte finish.

### Boss cap

Acetal resin based (POM) technopolymer, light-grey colour, push-fit assembly, removable by pressing on the outer edge (Elesa original design).

### Standard executions

- VDS+I: revolving handle type [L.621+x](#) in polyamide based (PA) technopolymer, black colour, matte finish.

Black-oxide steel boss, H7 reamed hole.

- VDS+I-SST: revolving handle type [I.621+x-SST](#) in polyamide based (PA) technopolymer, black colour, matte finish.  
AISI 304 stainless steel boss, H7 reamed hole.

- VDS+IEL: revolving handle type [IEL+x-SOFT](#) in technopolymer coated with "soft-touch" thermoplastic elastomer (TPE), black colour, matte finish.

Black-oxide steel boss, H7 reamed hole.



VDS+IEL

### *Special executions on request*

Bosses with hole and keyway in compliance with [DIN 6885/1 P9 tolerance](#).

To order the handwheel with keyway complete code and description with the index -K (i.e. 72651-R-K VDS.80+I A-8-K).

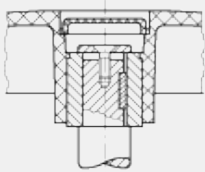
### *Accessories on request*

- Axial retaining washer type [GN 184](#) in black-oxide steel or type [GN 184.5](#) in AISI 303 stainless steel.

- VDS.125, VDS.150 and VDS.175 are available also with technopolymer boss caps in one of the Ergostyle colours (see table), to be ordered separately.

### *Ergonomy*

The rim with internal rear scallops makes the grip and the manoeuvre of the handwheel easier.



Assembly example  
with keyway and axial set screw

Standard Elements	Main dimensions	Bore	Handle	C #	L #	Weigh
-------------------	-----------------	------	--------	-----	-----	-------

Code	Description	D	L	I	d <sub>1</sub>	d <sub>2</sub>	d <sub>3</sub>	d <sub>4</sub>	d <sub>5</sub>	h <sub>1</sub>	d <sub>H7</sub>	h	H	m	R	[Nm]	[J]	g
72651-R	VDS.80+I A-8	83	29	9	18	16	21	26	19	8	8	17	45	M6	30.5	34	6	106
72652-R	VDS.80+I A-10	83	29	9	18	16	21	26	19	8	10	17	45	M6	30.5	34	6	108
72670-R	VDS.100+I A-8	102	34	10	22	20	27	30	25	9	8	22	60	M6	39	60	13	180
72671-R	VDS.100+I A-10	102	34	10	22	20	27	30	25	9	10	22	60	M6	39	60	13	174
72672-R	VDS.100+I A-12	102	34	10	22	20	27	30	25	9	12	22	60	M6	39	60	13	168
72700-R	VDS.125+I A-8	125	39.5	11	26	24	31	35	28	11	8	27	60	M6	49	125	25	282
72701-R	VDS.125+I A-12	125	39.5	11	26	24	31	35	28	11	12	27	60	M6	49	125	25	270
72702-R	VDS.125+I A-14	125	39.5	11	26	24	31	35	28	11	14	27	60	M6	49	125	25	258
72750-R	VDS.150+I A-8	150	44	12	26	24	34	38	30	10	8	30	65	M8	58	180	26	399
72751-R	VDS.150+I A-14	150	44	12	26	24	34	38	30	10	14	30	65	M8	58	180	26	379
72752-R	VDS.150+I A-16	150	44	12	26	24	34	38	30	10	16	30	65	M8	58	180	26	359
72800-R	VDS.175+I A-8	176	49	13	35	33	39	44	35	16	8	28	80	M10	70	195	26	530
72801-R	VDS.175+I A-16	176	49	13	35	33	39	44	35	16	16	28	80	M10	70	195	26	500
72802-R	VDS.175+I A-20	176	49	13	35	33	39	44	35	16	20	28	80	M10	70	195	26	470
72850-R	VDS.200+I A-8	200	53	14	40	38	44	50	40	13	8	36	90	M10	81	320	27	714
72851-R	VDS.200+I A-20	200	53	14	40	38	44	50	40	13	20	36	90	M10	81	320	27	674
72852-R	VDS.200+I A-24	200	53	14	40	38	44	50	40	13	24	36	90	M10	81	320	27	634
72911-R	VDS.250+I A-20	250	60	17	40	38	50	57	48	19	20	36	90	M10	104	500	30	934
72961-R	VDS.300+I A-20	300	66	20	40	36.5	68.5	72	66	20	20	44	90	M10	124	500	30	1260
72966-R	VDS.300+IEL A-20	300	66	20	40	36.5	68.5	72	66	20	20	44	65	M10	124	500	30	1270

# See [Technical Data](#) for maximum applicable torque (C) and impact strength (L).

Standard Elements		Main dimensions									Bore		Handle			C #	L #	Weight
Code	Description	D	L	I	d <sub>1</sub>	d <sub>2</sub>	d <sub>3</sub>	d <sub>4</sub>	d <sub>5</sub>	h <sub>1</sub>	d <sub>H7</sub>	h	H	m	R	[Nm]	[J]	g
72675-R	VDS.100+I-SST-10	102	34	10	22	20	27	30	25	9	10	22	60	M6	39	60	13	175
72705-R	VDS.125+I-SST-12	125	42	11	26	24	31	35	28	11	12	27	60	M6	49	125	25	273
72755-R	VDS.150+I-SST-14	150	44	12	26	24	34	38	30	10	14	30	65	M8	58	180	26	383
72855-R	VDS.200+I-SST-20	200	53	14	40	38	44	50	40	13	20	36	90	M10	81	320	27	681

# See [Technical Data](#) for maximum applicable torque (C) and impact strength (L).

C1
  C2
  C3
  C4
  C5
  C6  
 RAL7021   RAL2004   RAL7035   RAL1021   RAL5024   RAL3000

Code	Description	Boss cap for
29582-*	ECB.D2-*	VDS.125
29583-*	ECB.D3-*	VDS.150
29584-*	ECB.D4-*	VDS.175

\* Complete with colour index (C1,.....,C6).

This product had the following design awards:





ELESA and GANTER models all rights reserved in accordance with the law. Always mention the source when reproducing our drawings.

**STANDARD MACHINE ELEMENTS WORLDWIDE**