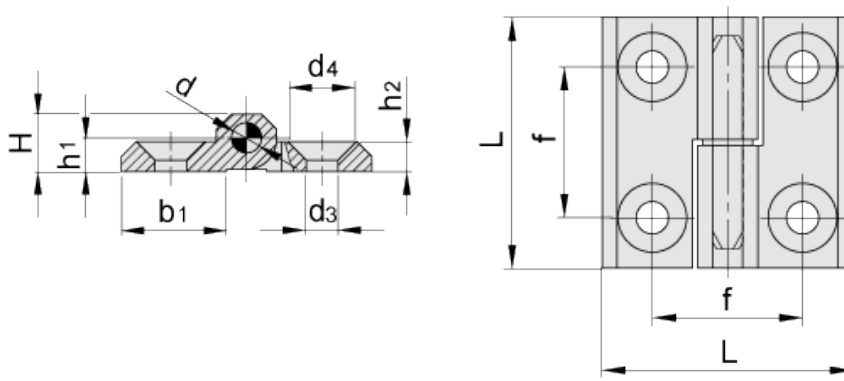


# CMMY

## Hinges



Elesa Standards		Main dimensions						Fitting		Weight	
Code	Description	L	f	H	h <sub>1</sub>	h <sub>2</sub>	b <sub>1</sub>	d	d <sub>3</sub>	d <sub>4</sub>	g
428801	CMMY.40-SH-5-D	40	25	9	5.5	5	16	4	5.3	10.5	40
428802	CMMY.40-SH-5-S	40	25	9	5.5	5	16	4	5.3	10.5	41
428811	CMMY.50-SH-6-D	50	30	11.5	6.5	6	21	6	6.4	12.5	80
428812	CMMY.50-SH-6-S	50	30	11.5	6.5	6	21	6	6.4	12.5	83
428821	CMMY.60-SH-8-D	60	36	15	8.5	8	26	8	8.3	16.5	153
428822	CMMY.60-SH-8-S	60	36	15	8.5	8	26	8	8.3	16.5	156

**Material**  
Die-cast zinc alloy.

**Colour**  
Black epoxy resin coating , matte finish.

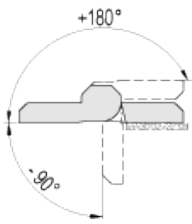
**Rotation pin**  
AISI 303 stainless steel.

**Washer**  
Polyamide based (PA) technopolymer.

**Standard executions**  
- CMMY-D: pin fixed to the right body.  
- CMMY-S: pin fixed to the left body.

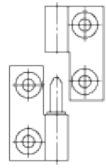
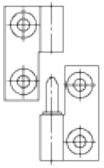
*Rotation angle (approximate value)*

Max 270° (-90° and +180° being 0° the condition where the two interconnected surfaces are on the same plane).  
Do not exceed the rotation angle limit so as not to prejudice the hinge mechanical performance.



CMMY-D

CMMY-S



STANDARD MACHINE ELEMENTS WORLDWIDE

ELESA models all rights reserved in accordance with the law. Always mention the source when reproducing our drawings.