

DIN 6311

Thrust pads with retaining ring

- **Material**
Turned and hardened steel.
- **Retaining ring**
Steel spring wire.

Features and applications

DIN 6311 thrust pads are used to transmit clamping forces by means of grub screws type DIN 6332 (see page 598). The retaining ring creates a simple and fast coupling between the threaded stud and the thrust pad. They can be adapted on irregular or non-parallel surfaces and prevent the rotating movement of the screw from being exerted directly on the piece to be locked.

GN 6311.1

Thrust pads with retaining ring

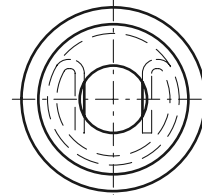
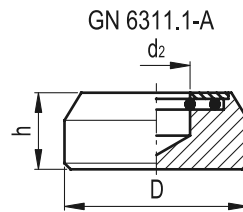
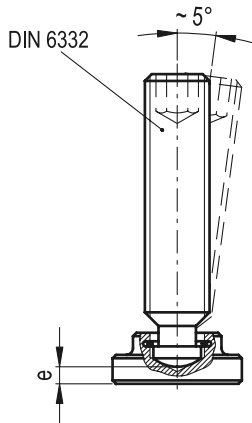
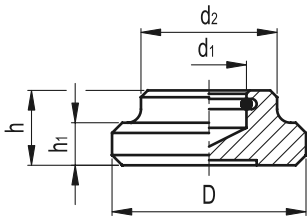
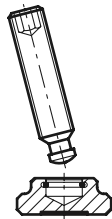
- **Material**
Black-oxide steel.
- **Support**
 - Execution **A**: without support.
 - Execution **K**: with support in acetal resin based (POM) technopolymer, natural colour. Maximum working temperature: 100°C.
- **Retaining ring**
Steel spring wire.

Features and applications

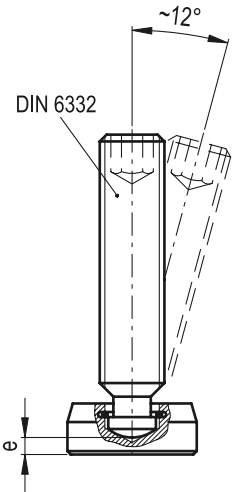
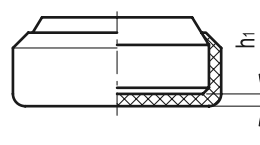
GN 6311.1 thrust pads are used to transmit clamping forces by means of grub screws type DIN 6332 (see page 598). The retaining ring creates a simple and fast coupling between the threaded stud and the thrust pad. They can be adapted on irregular or non-parallel surfaces and prevent the rotating movement of the screw from being exerted directly on the piece to be locked.



Assembly instructions



GN 6311.1-K



Standard Elements	Main dimensions								
Description	D	h	d1	h12	d2	h1	e~	*	g
DIN 6311-12-S	12	7	4.6	10	2.5	2.2	M6		4
DIN 6311-16-S	16	9	6.1	12	4	3	M8		9
DIN 6311-20-S	20	11	8.1	15	5	3.6	M10		17
DIN 6311-25-S	25	13	8.1	18	6	4.5	M12		33
DIN 6311-32-S	32	15	12.1	22	7	5.3	M16		59
DIN 6311-40-S	40	16	15.6	28	9	5.6	M20		105

* Threading of the corresponding grub-screw DIN 6332

Standard Elements	Main dimensions						⚖
Description	D	d2 +0.2	e	h	h1	*	g
GN 6311.1-16-A	16	6.3	2.2	8	-	M8	11
GN 6311.1-20-A	20	8.4	2.6	10	-	M10	20
GN 6311.1-25-A	25	9.2	2.9	11	-	M12	35
GN 6311.1-32-A	32	12.5	4.5	14	-	M16	70
GN 6311.1-16-K	16	6.3	2.2	8	1.5	M8	13
GN 6311.1-20-K	20	8.4	2.6	10	1.5	M10	22
GN 6311.1-25-K	25	9.2	2.9	11	1.5	M12	35
GN 6311.1-32-K	32	12.5	4.5	14	1.5	M16	74

* Threading of the corresponding grub-screw DIN 6332