

GN 752 GN 752-NI

Joint pieces

• Material

- GN 752: zinc-plated steel, blue passivated.
- GN 752-NI: AISI 303 stainless steel, matt, shot-blasted.

Applications

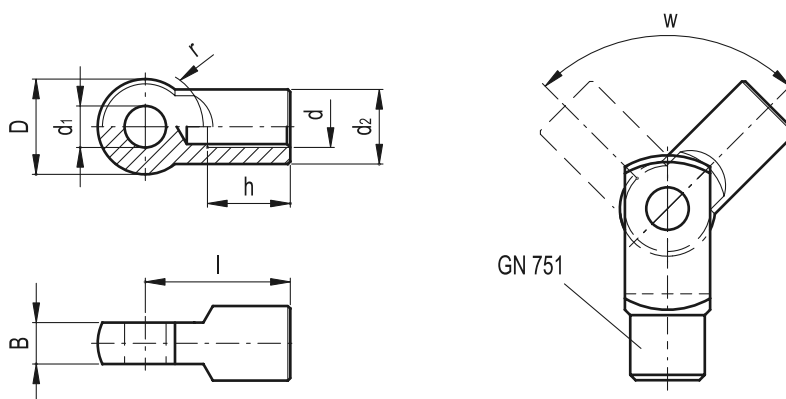
Joint pieces GN 752 are designed to be used in combination with fork heads DIN 71752 respectively fork joints GN 751.



10

706

Joints



| Standard Elements | | Main dimensions | | | | | | | | | | △△ | |
|-------------------|------------------|-----------------|-----|-------|----|----|--------|----|-----|-------|-----|-----|--|
| Description | Description | d1 H9 | d | h min | D | d2 | B -0.2 | l | r | w min | g | g# | |
| GN 752-6-M6 | GN 752-6-M6-NI | 6 | M6 | 12 | 14 | 10 | 6 | 22 | 8.5 | 218° | 11 | 11 | |
| GN 752-8-M8 | GN 752-8-M8-NI | 8 | M8 | 16 | 18 | 14 | 8 | 29 | 12 | 218° | 28 | 28 | |
| GN 752-10-M10 | GN 752-10-M10-NI | 10 | M10 | 20 | 23 | 18 | 10 | 35 | 14 | 212° | 56 | 57 | |
| GN 752-12-M12 | GN 752-12-M12-NI | 12 | M12 | 24 | 27 | 20 | 12 | 43 | 17 | 216° | 88 | 89 | |
| GN 752-14-M14 | GN 752-14-M14-NI | 14 | M14 | 28 | 30 | 24 | 14 | 50 | 19 | 214° | 141 | 142 | |
| GN 752-16-M16 | GN 752-16-M16-NI | 16 | M16 | 32 | 36 | 26 | 16 | 56 | 22 | 216° | 197 | 199 | |

values for GN 752-NI



Elesa+GANTER

ELESA and GANTER models all rights reserved in accordance with the law. Always mention the source when reproducing our drawings.